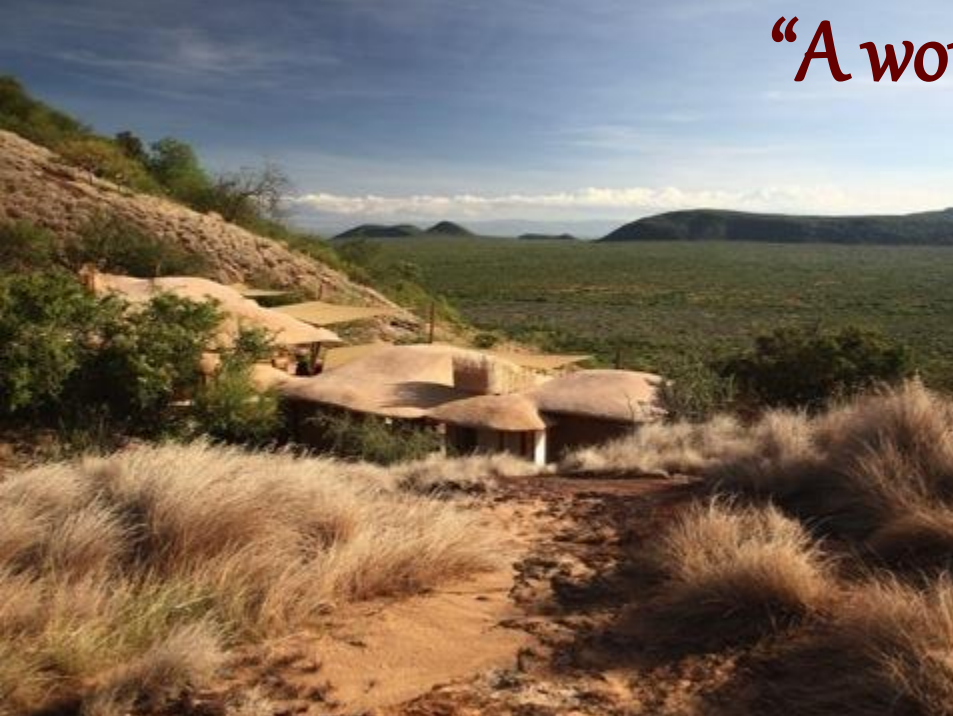




Saruni – ‘sanctuary’ (Maa & Samburu language)



“A world away”





Masai Mara & Samburu - Kenya

Lodges Location Map



Proposed circuit

- A pioneering collection of unique and intimate lodges and camps found in Kenya's most beautiful and private wildlife conservancies;
- The ultimate in authenticity in partnership with sustainable conservation and the local communities;
- Away from the crowds and off the beaten track in Kenya's most spectacular and diverse areas offering truly authentic Kenya and culture;
- Operating the first black rhino tracking experience in East Africa.





Riccardo Orizio
comes to Kenya

2003

Saruni Mara
opened

2003

Saruni Wild
opened

2005

Saruni Samburu
opened

2008

Saruni Wild
re-located

2015

Photographic Hide
opened

2016

Saruni Rhino
opened

2017

Saruni Rhino Family
Banda & Pool opened

2018



- Discover **less explored** and **wildlife rich** corners of Kenya
- **Authentic, classic** and **stylish** safaris
- Learn from the **ancient wisdom** of the Samburu and Maasai
- Explore **secluded** wilderness
- Join and support a **pioneering** conservation initiative in both the Masai Mara and Northern Kenya
- Share and take home **life-enriching** experiences





SAYINI

Safari Lodge - Samburu - Kenya





Kalama Airstrip

- Revered for its **innovative eco-design** and **uninterrupted views**;
- The only lodge in Kalama Conservancy – **240,000 acres** of unspoilt, protected wilderness enjoyed **exclusively**;
- Prime game viewing, **abundant wildlife** and **rare** species, with Samburu National Reserve and Buffalo Springs next door;
- **Samburu** guides who share their local, **authentic** insight and **culture**;
- Complete **seclusion**.



The Lodge

- **Unique style**, built on top of the mountain
- **Six luxury villas**, each with their own **private deck** and unending views
- Four large **family suites**
- All individually designed with an **elegant Bedouin touch**
- **Intimate and exclusive**
- Two large **infinity pools** with spectacular views
- Samburu Wellbeing Space
- Professional ground-level Photographic Hide in front of a waterhole visited daily
- Italian-inspired cuisine, **catering for all** tastes



Incredible views stretching all the way to Mount Kenya



Tucked into the mountain in complete seclusion



Style



Character & Individuality



Wilderness



Relaxation amongst the elements



Space



Private meals in secluded places



Dramatic landscapes and spectacular views



'Out of Africa' experience



Activities

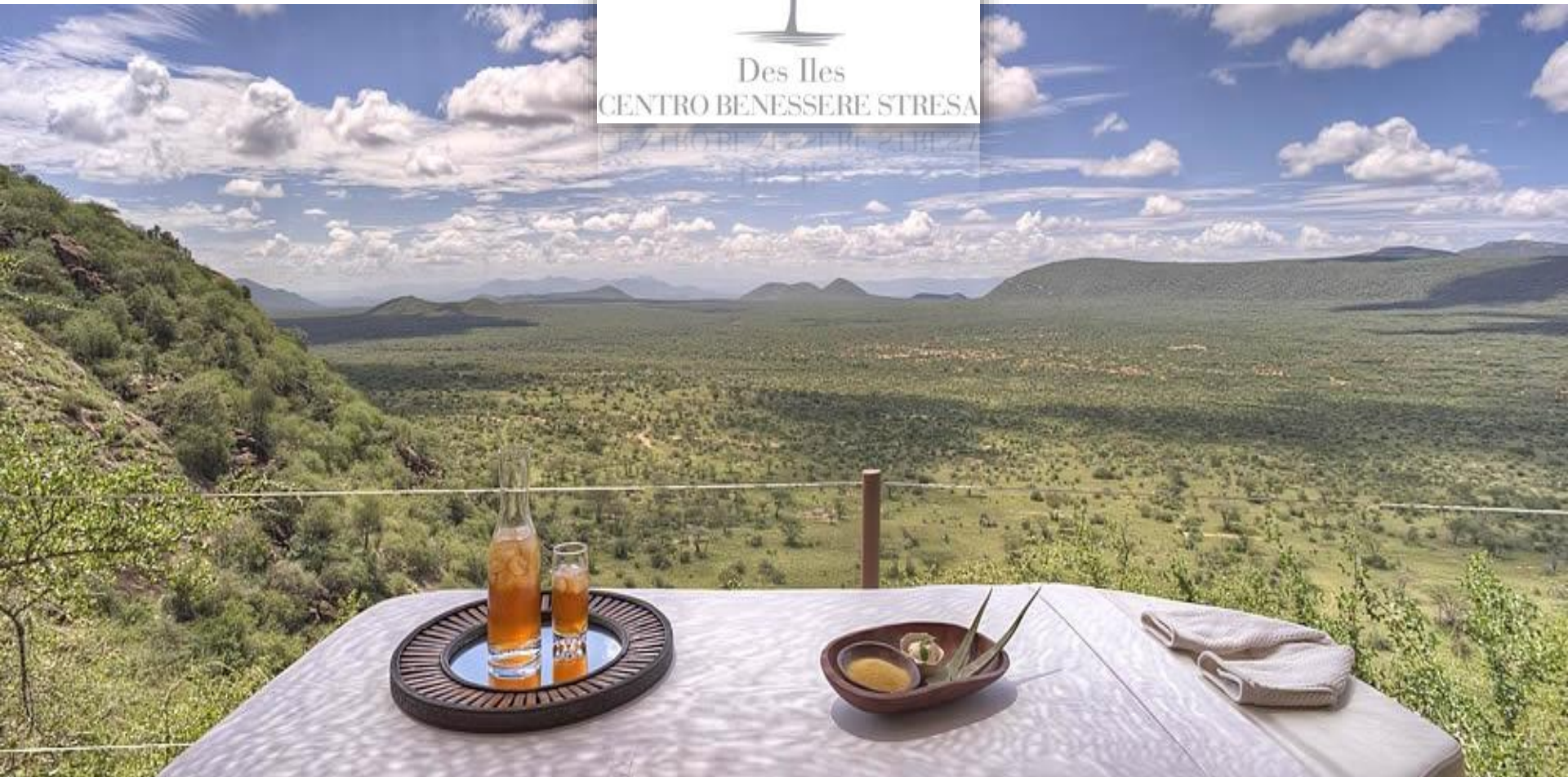
- Day and night game drives
- Photographic Hide
- Bird Watching
- Stargazing
- Guided bush walks
- Visit to local Samburu caves and ancient rock art
- Warriors Academy (bookable in advance)
- Scorpion Safari
- Mount Ololokwe excursions (payable extra)
- 2 x large infinity pools
- Samburu Wellbeing Space (additional treatments payable extra)
- Bush dinners and picnics
- Sundowners
- Saruni Gift Shop
- Heli Excursions (payable extra)
- Reteti Elephant Sanctuary (payable extra & bookable in advance)



Infinity pools...with breathtaking views



Samburu Wellbeing Space – Saruni Spa



Professional Photographic Hide



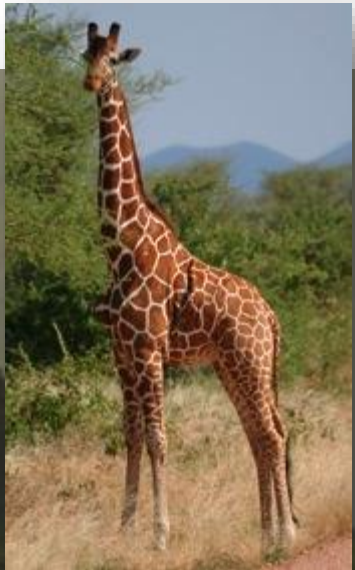
Waterhole with daily visits



Expert Samburu guides



Samburu Special Five



Samburu Ellies



Sacred Mountain Excursion



Samburu culture



Gorgeous sundowners



Bush dinners under vast, starlit African skies



Unforgettable cultural experiences



Cheers!





East Africa's first Black Rhino Tracking Experience



'An historical moment'

- **First** community conservancy in Africa to own and operate a **sanctuary** dedicated to the conservation of the critically endangered **black rhino**;
- **First** time the **black rhino** is back to Northern Kenya after 30 years;
- **First** time **black rhino tracking experience** available in Kenya;
- **Elite-trained** anti-poaching units with **state-of-the-art** technology;
- **Samburu** guides who share their local, **authentic** insight and **culture**;
- Prime game viewing, **abundant** **wildlife and bird life** and **rare** species;
- **Perfect** oasis amidst the arid rangelands of the north;
- **Unique** location; amongst doum palms dotted along a dry river bed (the Kauro 'lugga').

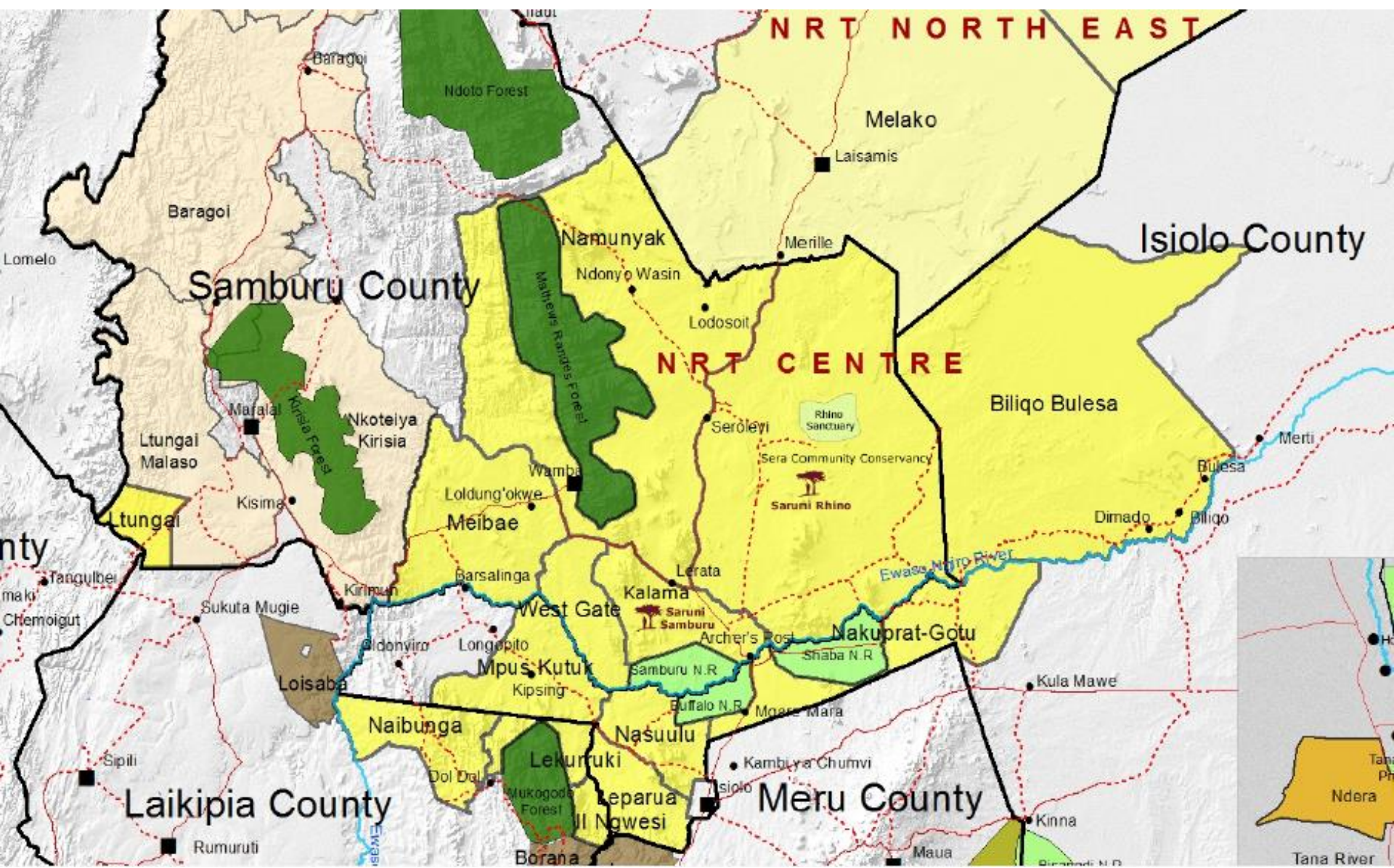




One Year On



- Additional Family Banda – bringing **total capacity to 8 guests**;
- **Infinity pool** alongside dry river bed with **views of elephants** at waterhole;
- **Growing rhino population** – 3 pregnancies since translocation: 1 in January 2018. 2 more suspected pregnancies. Total count 13 – 10 adults, 3 calves;
- To date – **100% sightings**: some days with multiple sightings per tracking session. Record – 6 sightings in 1 session;
- Multiple daily visits at camp's waterhole of **60+ elephants**, birdlife & other animals;
- Waterhole with specially-designed flood-light for **night-time viewing**;
- Increased activity at nearby **various Singing Wells**;
- **Eland translocation** into the Sanctuary;
- Hands on experience – recent Saruni guest **elephant rescue**;
- Increased local **community employment opportunities**;
- Additional NRT & other **donor funds** available to enhance experience – tented camp in Sanctuary, Release Centre for Sera wildlife from Reteti;
- Watch this space!



Getting there

- Saruni Rhino is approx. **a 2 hours' drive north** from Saruni Samburu;
- **Multiple airstrips** for private air charter throughout Sera Community Conservancy (15 mins' flight from Kalama);
- **Kalama airstrip** for domestic flights;
- **Road transfers** from airstrip/Saruni Samburu **included** in combined SS & SR package.



The Experience

- Two night minimum stay in **elegantly simple, rustic accommodation** – safari at its best;
- **Black rhino tracking on foot** with expertly-trained anti-poaching Rangers and Samburu guides, equipped with transmitters;
- Game-driving in **54,000 hectares**-large sanctuary and **350,000 hectares**-large Sera Conservancy;
- Abundant wildlife and birdlife, with spectacular sightings of natural watering cycles;
- Authentic cultural insights into pastoralist lifestyle in the arid North.



Epic landscapes



State-of-the-art technology



Expert Samburu guides & anti-poaching Rangers



Up-close encounters



'Banda'-style Accommodation

- Three stone *en-suite bandas* (cottages), each with its own **private sandy terrace** and spectacular views;
- **Communal** dining and relaxation area – 'Swara House';
- Two *bandas* are **doubles**; the other is a '**Family Banda**' that sleeps 4 in two bedrooms;
- **Beach-club feel**; sandy terraces with sun loungers & umbrellas and infinity pool;
- **Simple yet elegant design** – in true Saruni-style in harmony with surroundings;
- **Intimate and exclusive.**



**NEW: Family Banda
& Swimming Pool**

**Now
Open!**

NEW: Family banda accommodation





NEW: Open & closed canvas



NEW: Rustic yet elegant open spaces





NEW: Spacious open lounge – spot the Ellies!



Style and nature



Elegant simplicity



Colourful relaxation & dining



NEW: Waterhole in front of family banda



NEW: Bush TV at its best



NEW: Infinity pool in harmony with wildlife



NEW: Swim and dine in style



Life on a spectacular dry river bed



Activities

- Rhino Tracking on foot (payable extra)
- Game drives
- Waterhole sightings
- Swimming
- Bird Watching
- Guided bush walks
- Sand grouse spectacular
- Bush dinners and picnics
- Sundowners
- Nearby wells visit (Singing / Fifty)
- Sunset Lugga Walks
- Reteti Elephant Sanctuary (payable extra & bookable in advance)



Sand grouse spectacle



Magic of the Singing Wells



Saruni Rhino – need to know



- **Current nightly Saruni safari rate** - based on per person sharing on an all inclusive accommodation basis;
- Sera Conservancy fee & Rhino Tracking Session per day - **\$175 per person** (incl. of VAT)
- Rhino Tracking available to **over 16 years old only** – childcare available (payable extra);
- **Minimum 2 nights' stay** at Saruni Rhino combined with **2 night's at Saruni Samburu pre-requisite**. Can't be combined with any Saruni offer;
- Must have adequate medical insurance & evacuation coverage.

Saruni Rhino rates

2018 Rates

SEASON Rates from 3 rd January 2018-2 nd January 2019	RACK RATE USD PPPN SHARING (2 nights' min. stay)*	CONSERVATION FEES + RHINO TRACKING TOTAL USD PP
High Season July, August, September & 20 th December 2018-2 nd January 2019	\$780	\$175
Other Seasons	\$630	\$175
Single occupancy (High Season)	\$930	\$175
Single occupancy (Other Seasons)	\$750	\$175
Child aged 5-16 (High Season)	\$390	\$58***
Child aged 5-16 (Other Seasons)	\$310	\$58***



*A 2 nights' minimum stay at Saruni Rhino combined with a 2 nights' minimum stay at Saruni Samburu is required. The Saruni Rhino and Rhino Tracking Experience Package cannot be combined with any Saruni Offer.

**Per person per early morning or late afternoon tracking session. Additional rhino tracking sessions are payable extra.

***The Rhino Tracking Experience is only available to guests over 16 years of age. Children under the age of 16 years can stay at Saruni Rhino paying the current Saruni child's rate and the conservation fee but due to safety reasons will not be permitted to participate in the Rhino Tracking Experience.

Saruni Rhino details



INCLUDED:

- Full board accommodation & limited laundry service
- Soft drinks, house wines, beers & select non-luxury spirits
- Return transfers to and from Saruni Samburu & local airstrip
- One Rhino tracking session per day
- Shared day & night game drives in 4x4 vehicles and guided bush walks
- Bush meals, sundowner & picnic excursions
- Cultural visits & transfers
- VAT & Taxes

EXCLUDED:

- Conservation fees & Rhino Tracking Experience fees
- Additional Rhino tracking sessions per day
- Exclusive use of vehicle
- Premium drinks
- Gratuities to staff & guides and anything of a personal nature
- Temporary Flying Doctors cover (mandatory)
- Entry fees to cultural visits, and any payable extra activities
- Childcare and all statutory increases beyond our control

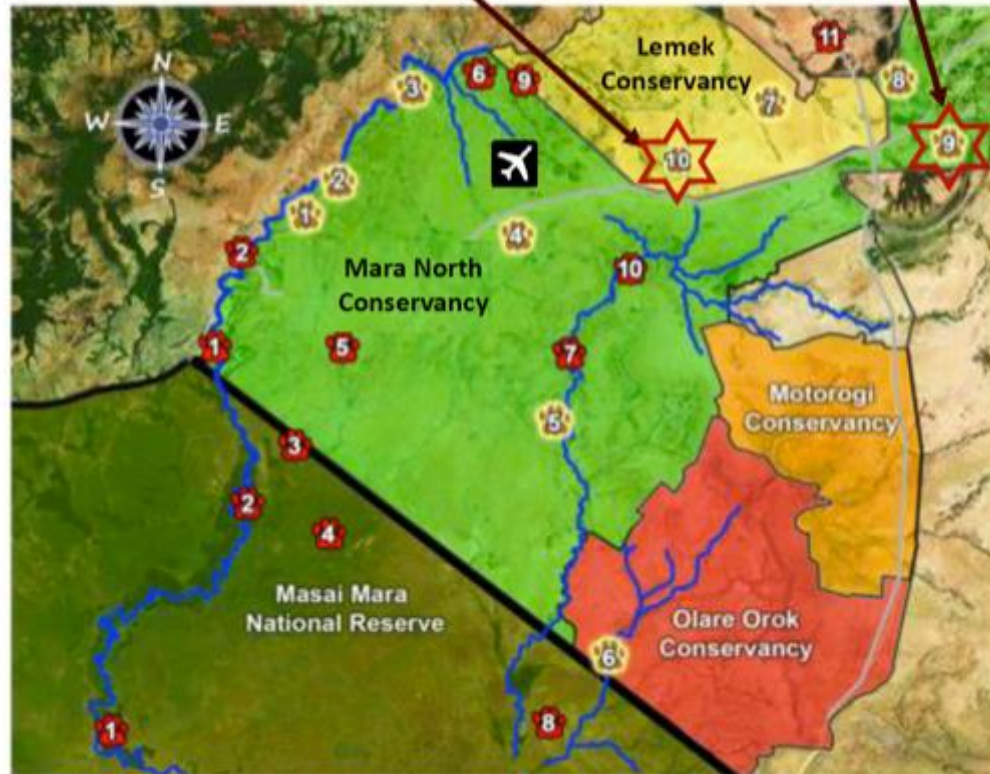




Savini

Safari Lodge - Masai Mara - Kenya



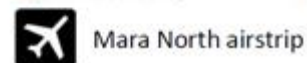


Camp and Lodge Key:

- | | | |
|------------------------|----------------------|---------------------------|
| 1 Karen Blixen Camp | 2 Serian Camp | 3 Royal Mara Safari Lodge |
| 4 Elephant Pepper Camp | 5 Offbeat Mara Camp | 6 Mara Plains Camp |
| 7 Kicheche Mara Camp | 8 Nomadic Encounters | 9 Saruni Lodge ★ |
| 10 Saruni Wild ★ | | |

Points of Interest:

- | | | |
|------------------------|---------------------|---------------------------|
| 1 Wildebeest crossings | 2 Mara River | 3 Musiara Gate |
| 4 Musiara Airstrip | 5 Leopard Gorge | 6 Mara Shikar Airstrip |
| 7 Olare Orok River | 8 Olkiombo Airstrip | 9 Mara North headquarters |
| 10 Acacia Valley | 11 Rhino Sanctuary | |



- Situated in the **Mara North Conservancy**
- **74,000 acres** of private, protected wilderness and only 10 lodges
- Only lodges in Mara North can game drive in the area
- All park fees go back to the **local communities**
- Set in a **remote acacia valley** with wonderful views over Mara plains
- Within the **prime game viewing** area of the Masai Mara ecosystem



The Lodge

- *Smallest permanent lodge in the Mara*
- *Intimate and exclusive*
- *5 double cottages, 1 family villa and 1 private villa – the lodge can accommodate 18 people*
- *Furnished with selected antiques, Persian carpets and African art*
- *Themed rooms – luxurious and spacious*
- *Maasai Wellbeing Space*
- *Saruni Cuisine – fresh ingredients, Italian-inspired*
- *Local Maasai guides*



Classic



Elegant and intimate



Individual



Welcoming



Spacious family suite



Nyati House – The Owner's Private Villa



Activities

- Day and Night Game Drives
- Guided Bush Walks
- Scenic Flights & Balloon Flights (payable extra & upon request)
- Bird Watching
- Ol Chorro rhino sanctuary Visit (payable extra)
- Bush Meals
- Sundowners
- Maasai Wellbeing Space (additional treatments extra)
- Migration River Crossing (Reserve fees apply)
- Warriors Academy (bookable in advance)



Maasai Wellbeing Space – Saruni Spa



Abundant wildlife and incredible game drives



Expert Maasai Guides



The River Crossings



The Great Migration



Magical bush dinners





Savini

Tented camp - Masai Mara - Kenya



3 tents for a maximum of 8 guests



Spacious & comfortable



Common area for lounging & dining



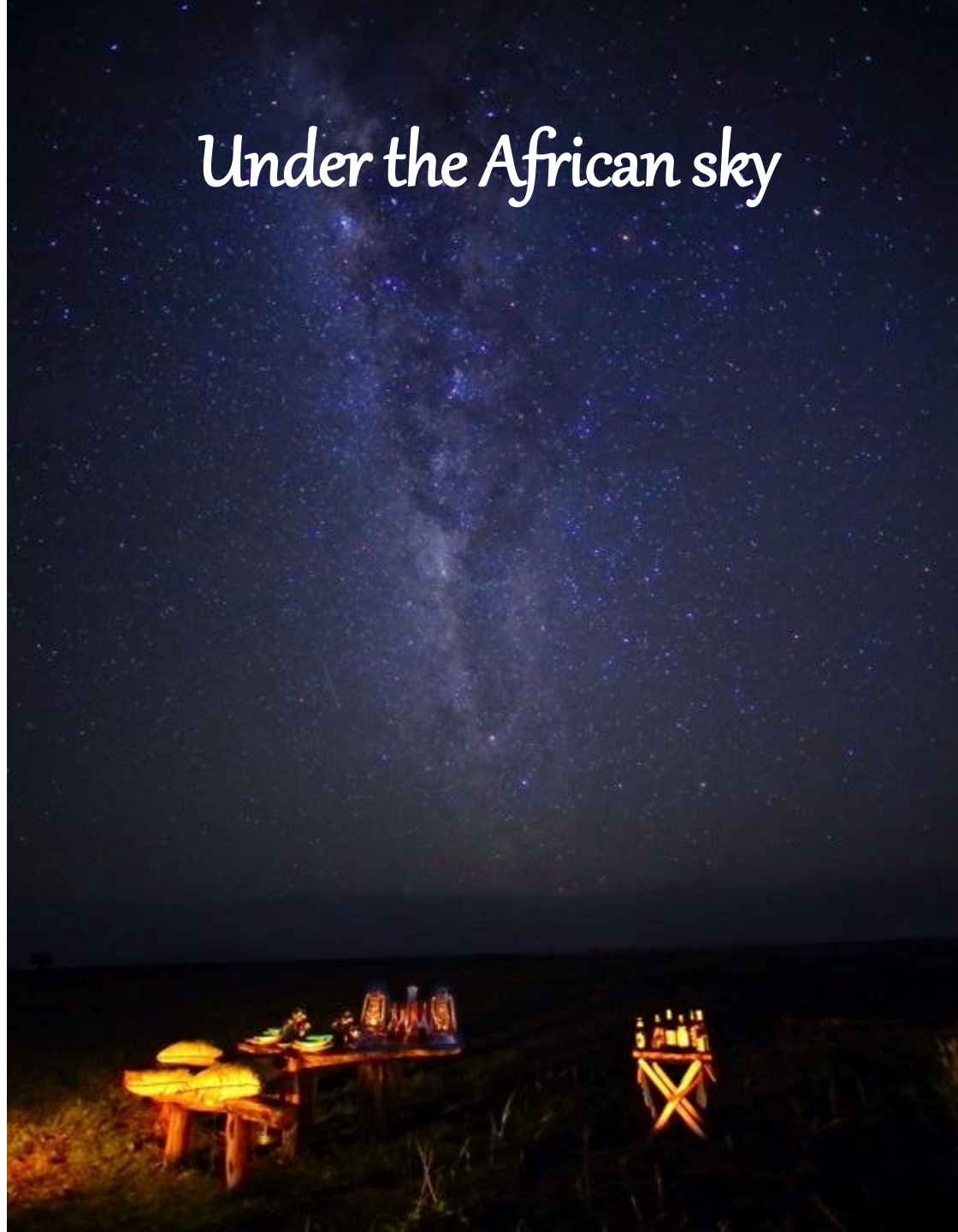
Wonderful views of the plains



'Al fresco' among the wildlife



Under the African sky



Maasai Cultural Experience



Italian-inspired Cuisine



Family focus – Warriors Academy



Happy-Ever-After



Wedding Packages – Traditional, Cultural, Religious



Saruni Weddings

US\$3,300 for the Saruni Safari Wedding Package

Saruni's intimate luxury lodges offer unmatched romance and complete seclusion in pristine wilderness - the perfect setting for an unforgettable wedding.

Celebrate this once-in-a-lifetime occasion in total exclusivity, surrounded by untouched wilderness in all directions.

Delight in the perfect combination of serenity and adventure, luxury and authenticity - an extraordinary beginning to your happily-ever-after journey.

Encounter dramatic views of teeming open plains and private forested valleys at Saruni Mara, and unending, rugged vistas at Saruni Samburu - a unique and breathtaking backdrop to your wedding.



Heavenly Honeymoons



Saruni Safari Rates

2018 Rates

SEASON Rates from 3 rd January 2018-2 nd January 2019	RACK RATE USD PPPN SHARING	CONSERVATION FEES USD PPPN SHARING
High Season July, August, September and 20 th December 2018-2 nd January 2019	\$780	\$116
Mid Season 3 rd January-end February, June, October & 1 st -19 th December 2018	\$630	\$116
Low Season March, April, May & November	\$460	\$116
Single occupancy (High Season)	\$930	\$116
Single occupancy (Mid Season)	\$750	\$116
Single occupancy (Low Season)	\$560	\$116
Child Aged 5-16* (High Season)	\$390	\$58
Child Aged 5-16* (Mid Season)	\$310	\$58
Child Aged 5-16* (Low Season)	\$240	\$58



*Children under the age of 5 stay free of charge when sharing with parents/adults. See the Child Policy section in the accompanying Booking Procedures, Terms and Conditions. Saruni Mara has a luxury villa called Nyati House for exclusive and private use - there is a double and twin bedroom and the cost is the adult rate x 4 (includes private guide) No Christmas or New Year supplements.

2018 Saruni Signature Offers



- ❖ **4 Nights for 3 Mara.** 3 or more nights in the Mara and get one night FREE (mid & high season)
- ❖ **50% Safari Honeymoon Offer** - Book 4 nights or more - 50% OFF for the Bride. (mid & high season)
- ❖ **4 Nights for 3 Samburu.** 3 nights at Saruni Samburu and get a 4th night FREE. (mid & high season)
- ❖ **6 Nights for 5 Samburu & Mara.** Book a 6 nights' combination of Saruni Samburu and Saruni Mara and get the 6th night FREE at Saruni Mara. (all year round)

No offer is cumulative with any other. No offers include Saruni Rhino

Safari Njema!

 Savani

