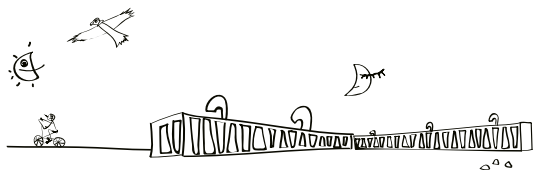


EXCURSION MENU

Soft Program





Traditional activities, with low physical demand. All ages can enjoy and experience the splendor of Patagonia.



Puerto Natales Walk.

Half Day – 1 hour – Low Difficulty

To understand how life goes by in the Province of Ultima Esperanza (Last Hope) it is important to know the history of Puerto Natales and its inhabitants. Among other things we will learn about how the city was built, the nature of its people as well as its traditions. We will visit different points of interest like Fishermen's Dock, City Council's Museum, Main Square and surrounding buildings.

Natales by Bicycle.

Half Day – 3 Hours – Medium Difficulty

For this excursion we will depart from Remota to the town of Puerto Natales which is located 1.5km from the hotel. The circuit will take us around the fjord of Last Hope to Fisherman's Pier, The Park of Cuatro Etnias and many other places where we would be able to observe how the locals live, their customs and traditions.

Puerto Prat - Puerto Consuelo.

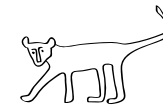
Half Day - 2 Hours. Low Difficult

A peaceful walk through the shores of Eberhard Fjord , starting from Port Prat to Estancia Puerto Consuelo. This route was used in the XIX century by gauchos and workers of the estancia.

Walk to the Three Caves.

Half Day - 2 hours. Low Difficulty

We will explore Cueva Chica (small cave), Cueva del Medio (middle cave) and the large Cueva del Milodon (Mylodon Cave), Mylodon was an extinct genus of giant ground sloth that lived in Patagonia until roughly 10,000 years ago. This is an important natural archaeological and cultural monument as also here the earliest human remains of the region were found (circa 6.000BC).





Benitez Trekking.

Half Day - 4 Hours. Medium Difficulty

In this excursion we will try to recreate the early settlements of Patagonia, we will get to know the rocky eaves used in the old days by the Tehuelche people. Also we will enjoy magnificent views of Lake Sofia and the valley of Sierra Señoret.

Field Day in Estancia.

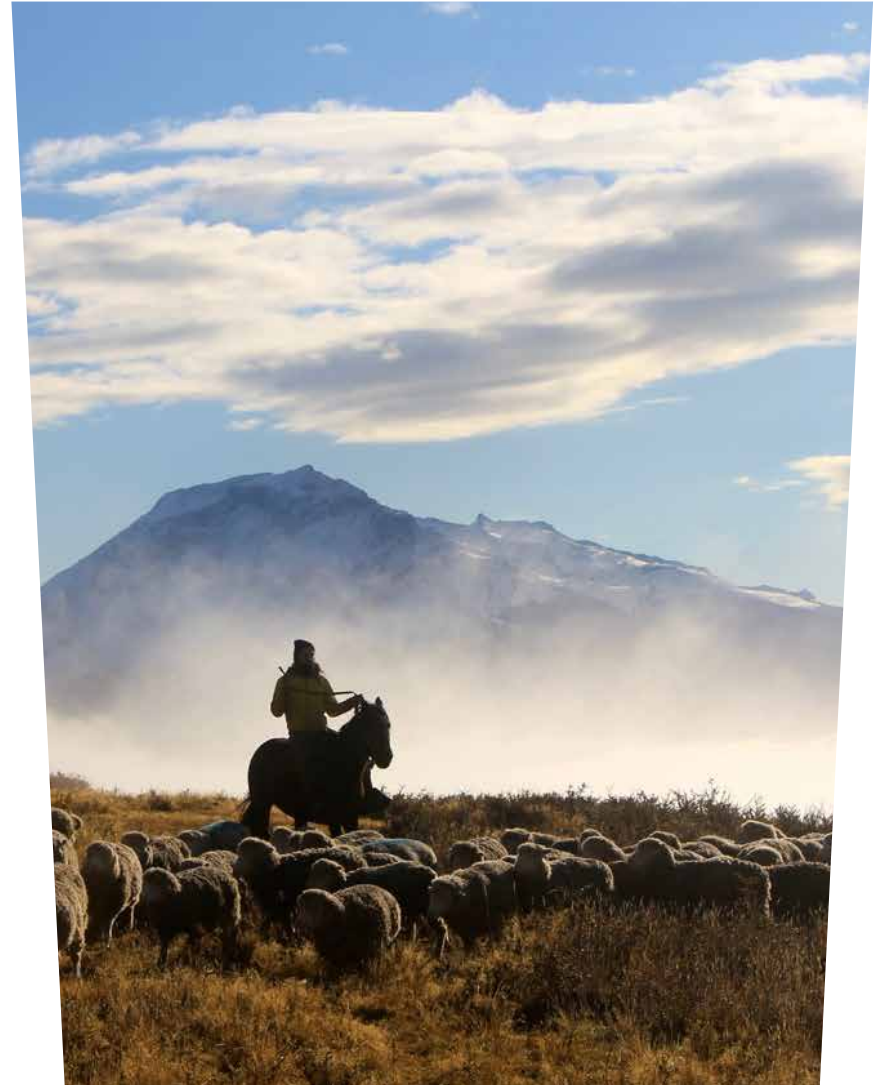
Full Day. Low Difficulty

We will depart from Remota to visit typical Chilean Patagonian Estancia, where the spirit and character of the first settlers can be felt in the shearing sheds of this faraway lands. We will also enjoy a typical Patagonian lamb roast on sticks.

Walk to the Valley of the Cattle Rustlers.

Full Day or Half Day. Low / Medium Difficulty

Forty-five minutes from Remota we arrive to Tres Pasos Valley, place with a unique history. In front of Lake Figueroa we find the old trail used by cattle rustlers to steal livestock from Chile to Argentina and vice-versa. We will start going deep through Chorrillo Picana stream until the access point to Sierra Krüger to reach the highest point of this area. Apart from the beautiful landscape we will be able to observe many birds like condor, eagles and many other species of the forests.





Navigation through the “Ultima Esperanza”.

Full Day (Navigation + 1 hour walk). Low Difficulty

This crossing will emulate the one made by Spanish skipper Juan Ladilleros in 1557, when as a last hope of finding the Magellan Strait he came across with the glaciers of Balmaceda Mount. We will depart from Puerto Natales, sailing for 3 hours through the fjord toward Barmaceda Mount, located with the Bernardo O'higgins National Park, the biggest in our country. We will dock at the national park, disembark to do a short walk to see the Serrano glacier. On our return we will visit a “Estancia” to enjoy a typical Patagonian lamb barbeque.



Navigation Lake Grey.

Full Day - 3 hrs navigation. Low Difficulty

Departing to Torres del Paine National Parl though Serrano route, we will visit the viewpoints of Lago del Toro, Los Cuernos and Grey Glacier to continue toward the Grey Lake where we will do a navigation of 3 hours to the Glacier with the same name. We will be surrounded by an unrivalled landscape of floating icebergs, luxuriant vegetation and majestic mountains. You will be able to appreciate at a very short distance all the beauty and magnitude of the glacier with ice walls with more than 20 meter high.

Torres del Paine National Park.

Full Day - Excursion by Van + 1½ hours Walk. Low Difficulty

This is the perfect excursion to have an overall vision of the park. We will visit Torres del Paine from one side to the other. Will enjoy all its viewpoints like Laguna Amarga and Lago Nordenskjoldt. And we will do short walks to visit Salto Grande, Cuernos Viewpoint and Viewpoint of the icebergs at the beach of Grey. Lunch and all entrance fees are included.

Blue Lagoon Full Day.

Excursion by Van + Wal . Low Difficulty

Photographic safari through Torres del Paine We will concentrate our tour on the eastern side of the park where most of the animals can be found. We will start at Laguna Azul (Blue Lake), place where the first tourist expedition to the area took place in which Lady Florence Dixie participated. The lagoon is one of the best places to see the Torres. From here we will continue to Paine waterfall and then a leisurely walk of 3 hours where we would be in close contact with wildlife specially guanaco of the Pampa. We will then visit a rocky refuge where old indigenous cave paintings can be found.





Remota Patagonia Lodge Route 9 North, km 1.5, Puerto Natales, Chile / Tel. +56 61 2414040
Santiago office Paris 888, floor 7, Santiago, Chile / Tel. +56 2 23871500
reservas@remota.net / www.remota.cl