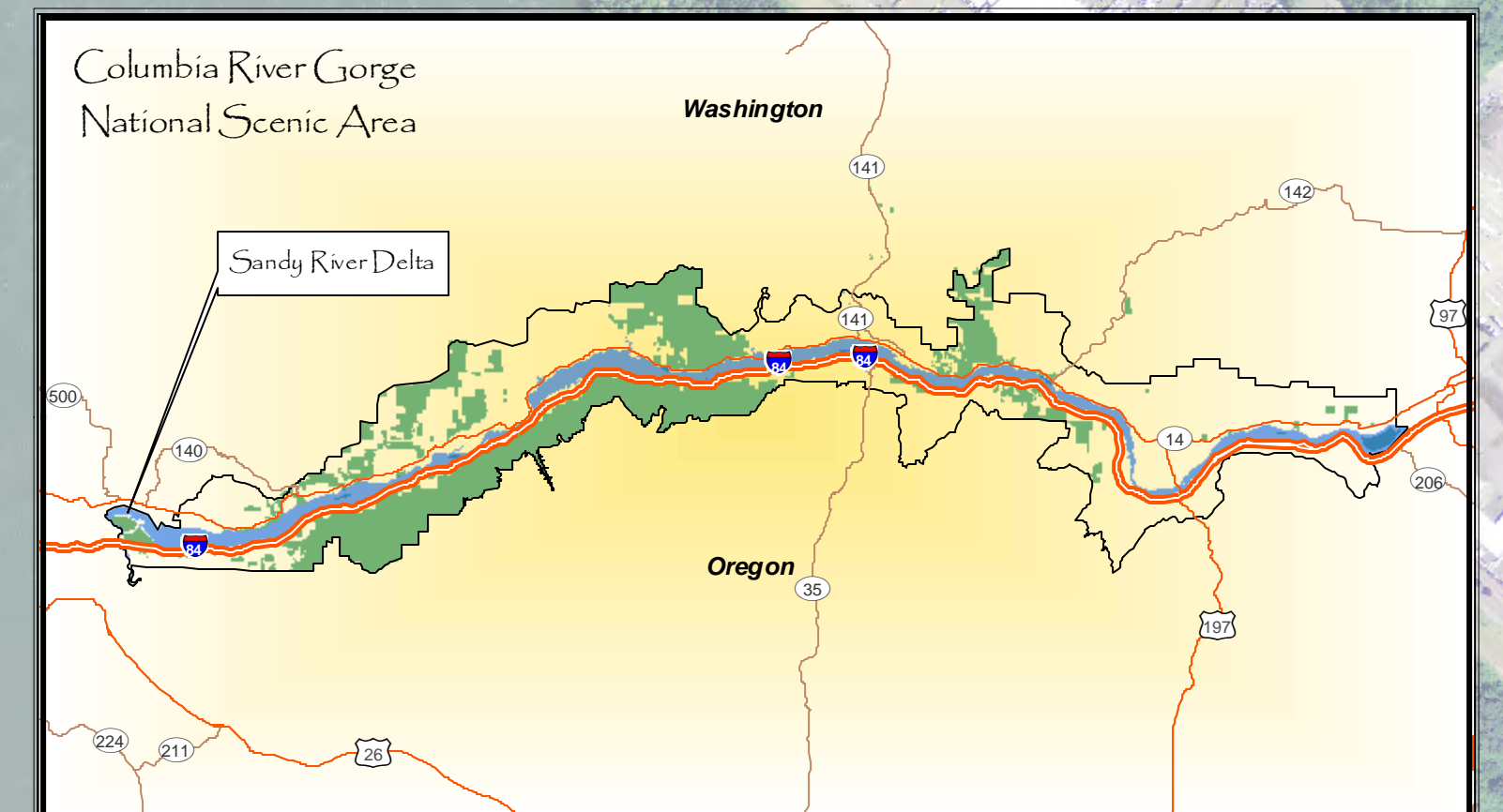


Sandy River Delta



The Sandy River Delta's wetlands have been restored in areas where the hydrology was appropriate for wetland development—mainly the southern portions, near I-84. Wetlands offer important open water habitat for wetland birds, beavers and other wildlife. Future restoration activities will continue to enhance vegetation in and around the wetlands.



Altered by human activity over the years, the Forest Service acquired this site to restore the land to its natural appearance and function. Restoration of the delta to support and enhance fish and wildlife use has taken place over the last fifteen years. Restored habitat is home to many neo-tropical birds during their migration as well as a variety of waterfowl.

Planting willows and wetland flowers illustrates the continuing efforts to restore and enhance the delta's native habitats. One of the most difficult problems is controlling invasive grasses. Reed canary grass continues to invade wetland habitat; every year managers work to control it and other invasive plants.



Surrounding the wetlands are acres of reed canary grass. This invasive species forms one habitat, or mono-culture, which is unusable by many wetland wildlife species. Our vision is to increase the number and diversity of native vegetation, while decreasing the invasives. Interested publics are invited and encouraged to aid in this effort.

Why does my dog have to be on a leash on the Confluence Trail and parking area?

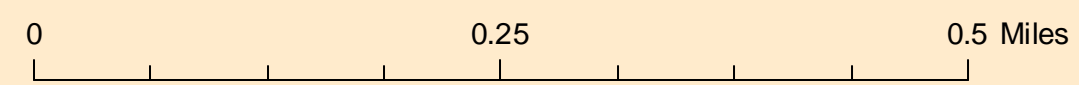


The Confluence Trail was designed to be an accessible trail for everyone. Therefore, a leash law is required for the Confluence Trail and the parking lot. Please follow the rules, even if other visitors are not.

There is a \$100 fine for dogs off leash in developed areas (Parking lot and Confluence Trail) 36 CFR 261.16(j).

Trail Distances from the Parking Lot

- Boundary Trail - 1-1/2 Miles
- Confluence Trail - 1-1/4 Miles
- Meadow Trail - 2 Miles
- Meadow Road - 1/2 Mile
- Ranch Dike Trail - 1-1/4 Miles
- Old Channel Trail - 3/4 Miles



Legend

- Bird Blind
- Gates
- Parking Area - DOGS must be on a LEASH
- Picnic Table
- Restroom
- Power Lines

Roads

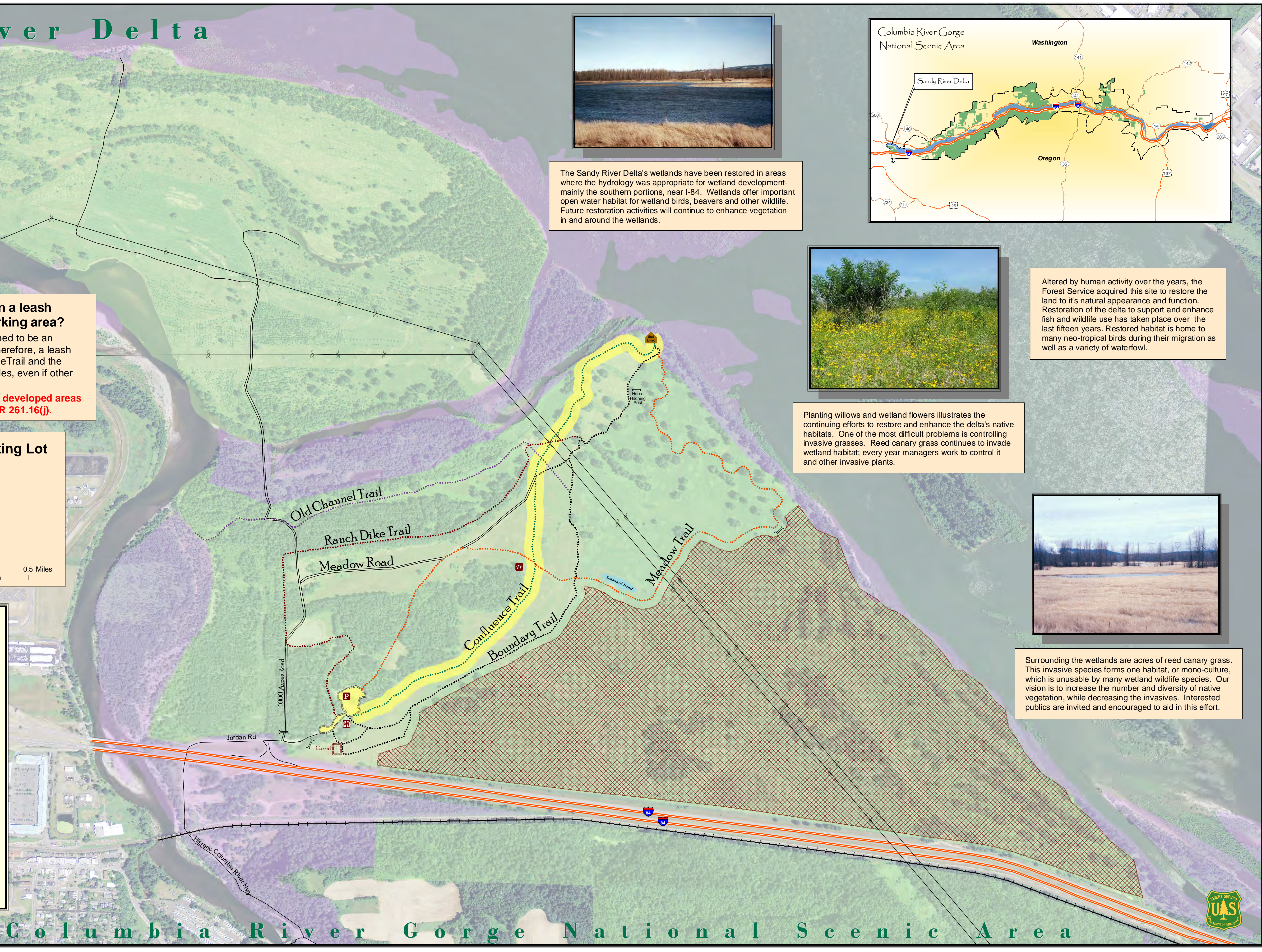
- Meadow Road
- 1000 Acres Road

Trails

- Boundary Trail
- Confluence Trail - DOGS on LEASH - Must be on leash within 100 Feet of the trail on either side.
- Meadow Trail
- Ranch Dike Trail
- Old Channel Trail

Ownership

- Federal
- State
- Closed to Protect Wildlife Habitat



Columbia River Gorge National Scenic Area

