



EXCURSION MENU Adventure Program





Requires a good level of fitness. Designed for those guests who like the challenge of an adventure. Visiting unique places, where nature is abundant and wild.

NEW SERRANO KAYAKING.

Minimum age 15 years / Maximum age 65 years.

Full day | 8 Hours | Medium / high difficulty

We depart from the hotel heading to Villa Serrano, located 50 miles from Puerto Natales, where specialized kayak guides will be waiting to meet us and give the pre-excursion instructions before paddling down Grey River; one of the most beautiful sceneries in Torres del Paine. The adventure begins at the shore of the river, where you are able to see the northwest side of the Paine Massif, and the southern Ice Field entrance. This excursion is highly recommended to lovers of the outdoors and nautical activities. An unforgettable experience is guaranteed.



NEW HORSEBACK RIDE IN A PATAGONIAN FIELD.

Half day | 5 Hours | Low / medium difficulty

Heading out from Remota, it takes about a 30-minute drive to get to a traditional Patagonian ranch (estancia). We will be received by a 'Gaucho' (Cowboy) who will take you on a ride through the Patagonian landscape, where you will see magnificent views of cliffs sculpted by glaciers and natural rock viewpoints, formed by wind erosion. In this imposing but spectacular environment, we will take a well deserved break to share some 'mate'; a traditional hot tea beverage of Patagonia.

NEW MOUNTAIN BIKE SOFÍA LAKE.

Half day | 5 Hours | Medium difficulty

This excursion will start in Estancia Rupestre, from where we will begin riding around Queso Hill, before arriving at the shore of Sofía Lake. Here we have beautiful views of the surrounding Señoret and Prat Mountain ranges. This ride is perfect for those who know how to ride, and want to challenge themselves off trail.





NEW ROCK CLIMBING.

Full day | 8 Hours | Medium / high difficulty

Seeing the forest and life of a place from a different point of view is one of the advantages of this excursion. Climbing to the top of a wall with the support of professional guides and being able to observe valleys, forests, lakes, mountains and glaciers from the top of a climbing route is a unique opportunity in Patagonia. It doesn't matter if you are not experienced in rock climbing. Our guides will lead you to the best route according to your experience.

NEW KAYAKING AT EBERHARD FJORD.

Half day | 5 Hours | Medium difficulty

We will travel by van just 30 minutes from the Hotel to Puerto Consuelo, where we will paddle to the end of the fjord. Then we will take a break to have a well-deserved and delicious snack before paddling back to Puerto Prat, another relevant place in the history of Puerto Natales at the Eberhard fjord. Our adventure comes to an end here and then we return to the hotel.





LOS REBAÑOS MOUNTAIN BIKE.

Half day - full day | Medium difficulty.

We leave Remota to head south of Última Esperanza province and enter Los Rebaños Estancia after a 45-minute drive. Once there, you will have different roads and trails throughout the estancia that will take you through the ancient forests of Lengua which are abundant with an array of bird species during summer and spring seasons.



CERRO TENERIFE HIKE.

Full day | 8 to 10 hours - 1.650 m.s.n.m | High difficulty

The summits of Patagonia are characterized by being technical and having low altitudes compared to the rest of the country. Cerro Tenerife is one of those that offers a unique opportunity to experience the Patagonian landscape. Mountain guides will help you complete this challenging excursion for those of you who feel the need to get out in the wild and do something beyond compare.





MIRADOR DEL TORO (BULL'S VIEWPOINT) / LAZO WEBER.

Full day | 8 Hours | Medium difficulty

We will start with a 2 hour tour by van towards the traditional Estancia Lazo, located just at the foot of Paine Massif. The trail is surrounded by Lenga forests displaying a huge variety of flowers during spring and summer. You will see several lakes whose surroundings provide refuge to a variety of different species of birds which are part of the incredible view. The trail finishes in Mirador del Toro (360° panoramic view), one of the best places to appreciate the geographic diversity of the Torres del Paine National Park.

SENO OBSTRUCCIÓN MOUNTAIN BIKE.

Half day | 5 Hours | Low / medium difficulty

We leave Remota heading south, driving through great lakes and mature Lenga forests. After 45 minutes of driving, the van arrives at the Estancia Pinto entrance from where we'll start riding with Lake Pinto in front and Rotundo Mount behind us. You will climb gradually to the highest point from where we will have the first view of Seno Obstrucción. From that point we will start going downhill crossing great Patagonian fields (estancias) and peat-moors to finally arrive at the shore of Seno Obstrucción.

BALMACEDA LAKE MOUNTAIN BIKE.

Half day | 5 Hours | Medium difficulty

This excursion starts in Estancia Los Rebaños. We'll descend through an old, majestic Lenga forest until we reach the shore of Balmaceda Lake. From there we will continue pedalling around the lake on an old cart trail; crossing streams, fences and wetlands. Towards the end you will be able to appreciate the beauty of the Patagonian Andes, Rotundo Mount and the Almirante Montt Gulf.





VIEWPOINT LAS TORRES / BASE TOWERS.

Full day | 8 Hours | High difficulty

After an hour and a half trip by van we will arrive at Cerro Paine. From there we will start hiking. To reach the Ascencio Valley you will climb to the Paso de los Vientos (Pass of the Wind) to get an amazing view of the pampa, lakes, and Ascencio valley. After that we will retrace the valley, crossing an old Lenga Forest to reach the beginning of a glacial moraine which we will start climbing step by step until we reach the Base Towers. If weather conditions permit you will have a great view of the towers. This without a doubt represents a challenge to anyone that likes hiking.

PINGO VALLEY.

Full day | 8 Hours | High difficulty

It will take an hour and a half to reach the beginning of the trail. We'll walk through old forests, meadows and bushland to get to the Salmon Waterfall, walking along the Pingo River bank. The highlight of this excursion is arriving at the impressive Pingo Waterfall, running from the glacier with the same name. Throughout the walk you will spot an array of native birds. We will try our best to find the elusive Southern Deer or Huemul, a unique native and sadly an endangered species that inhabits the depths of the valleys and forests of Torres del Paine National Park.





CERRO CASTILLO HIKE.

Full day | 8 Hours | High difficulty

After a 45 minute ride by van we will arrive at Cerro Castillo located in an old estancia called Complejo Torres del Paine, part of the 'Exploiting Society of Tierra del Fuego'. From there we will start our challenge to try and conquer the summit of Cerro Castillo. Here you will enjoy an amazing panoramic view of the province below. One of the most challenging excursions but at the same time rewarding of the Remota experience.



BENÍTEZ HIKE.

Full day | 8 Hours | Medium / High difficulty

We will start our walk at the natural monument of the Cueva del Milodón (Cave of the Milodon). From here we will go deep into this area and start climbing to the summit of Cerro Benítez. From the summit you will be able to see Condors and Eagles as well as experience a panoramic view of Lake Sofía and the Patagonian Andes.

VENTISQUERO VALLEY HIKE.

Half day | 5 Hours | Low / medium difficulty

We will depart from the hotel by van, taking the Milodon Cave route Y-290 for 45 minutes until we arrive at one of the closest valleys to the town of Puerto Natales. From there we will cross the Ventisquero Valley that gives us a taste of Magellanic forests, pre-Andean bushland and great waterfalls. Thanks to Remota guests are able to visit this landscape exclusively, and enjoy one of the incredible landscapes hidden in Patagonia.





FRENCH VALLEY.

Only available between November 01 to March 15.

Full day | 8 Hours | Medium / high difficulty

We will board Hielos Patagónicos Catamaran in Pudeto. After around 30 minutes navigation on Lake Pehoe we will arrive at Paine Grande. From here we will start our hike toward the valley, surrounding Lake Skottsberg until we get to the Italian Camp. The climb to the viewpoint is sheltered by the Glacier El Francés, El Paine Grande and Los Cuernos, imposing rock formations and the heart of Torres del Paine.



ICE HIKING.

Minimum age 15 years / Maximum age 65 years.

Full day | 8 Hours | High difficulty

We will head west towards the Torres del Paine National Park, on route we will enjoy magnificent views of Patagonian lakes and the Cuernos del Paine (Horns of Paine). On arrival at Lake Grey, you will board a catamaran to Base Camp to start the highlight of the day. From there you will walk over the Grey Glacier, a unique experience in the Southern Ice Fields that are thousands of years old. Our expert guides will give you an induction talk, guiding you through the equipment and will look after you throughout the whole excursion to ensure safety and make it an unforgettable time.

KAYAK THROUGH THE ICEBERGS OF GREY GLACIER.

Minimum age 15 years / Maximum age 65 years.

Full day | 8 Hours | High difficulty

Once we arrive at Lake Grey, we will board a catamaran to the base camp to start kayaking. Specialized guides will give you technical instructions on the use and safety of the kayak and then take you paddling between the icebergs and the glacier. After this exciting activity, we will return to the catamaran and then to our van to return to Remota.



Traditional activities of low physical demand, where you can enjoy the experience of nature in Patagonia.

PUERTO NATALES WALK.

Half day | 1 Hour and a half | Low difficulty

To experience and understand life in the Province of Última Esperanza (Last Hope) it is important to know the history of Puerto Natales and its inhabitants. Among other things, we will learn about how the city was built, the nature of its people as well as its traditions. You will visit different points of interest such as Fishermen's Dock, the City Council Museum, Main Square and surrounding buildings.

WALK TO THE THREE CAVES.

Half day | 5 Hours | Low difficulty

We will explore Cueva Chica (Small Cave), Cueva del Medio (Medium Cave) and the large Milodon Cave. Milodon is an extinct genus of giant ground sloth that lived in Patagonia until roughly 10,000 years ago. In addition, this is an important archaeological and cultural monument because the earliest human remains of the region were discovered here.

BENÍTEZ TREKKING.

Half day | 5 Hours | Medium difficulty

In this excursion we will try to recreate the early settlements of Patagonia and get to know the rocky eaves, used in the old days by the Tehuelche people. We will also enjoy magnificent views of Lake Sofia and the valley of Sierra Señoret.

FIELD DAY IN ESTANCIA.

Full day | 8 Hours | Low difficulty

We will depart from Remota to visit a typical Patagonian Estancia where the spirit and character of the first settlers can be felt in the shearing sheds of these far-away lands. We will also enjoy authentic Patagonian lamb roast on a stick.





TORRES DEL PAINE NATIONAL PARK.

Full day | 8 Hours | Low difficulty

This is the perfect excursion to get an overall view of the park. You will see Torres del Paine from one side to the other. You can enjoy all its vistas, including Amarga Lagoon and Nordenskjöld Lake. We will do short walks to visit Salto Grande, Cuernos lookout and the Icebergs viewpoint, at the Lake Grey beach. Lunch and all entrance fees are included.

ACTIVE FULL DAY TORRES DEL PAINE NATIONAL PARK.

Full day | 8 Hours | Medium / low difficulty

A photographic safari through Torres del Paine. We will concentrate our tour on the eastern side of the park where most of the animals can be found. You will start hiking at the Sarmiento lake entrance and crossing to the Amarga Lagoon entrance. From here we will walk through the Patagonian steppe, habitat of guanacos and pumas where you will be able to see the Paine massif from a distance. After this you will continue to the Nordenskjöld lake lookout and Pehoe camp. After lunch the next stop is the Paine river waterfall, the main artery of the park, and heart of the hydrologic network in Torres del Paine.





BALMACEDA AND SERRANO NAVIGATION.

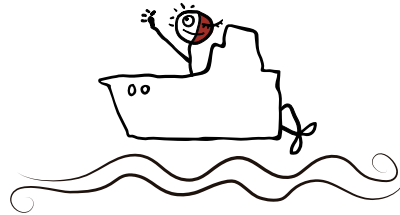
Full day | 8 Hours | Low difficulty

This crossing will emulate the one made by Spanish skipper Juan Ladrilleros in 1557, when as a last hope of finding the Strait of Magellan he came across with the glaciers of Balmaceda Mount. We will depart from Puerto Natales, sailing for 3 hours through the fjord toward Balmaceda Mount, located at the Bernardo O'Higgins National Park, the biggest in our country. We will dock at the national park, disembark to do a short walk to see the Serrano Glacier. On our return we will visit a estancia to enjoy a typical Patagonian lamb barbecue.

LAKE GREY NAVIGATION.

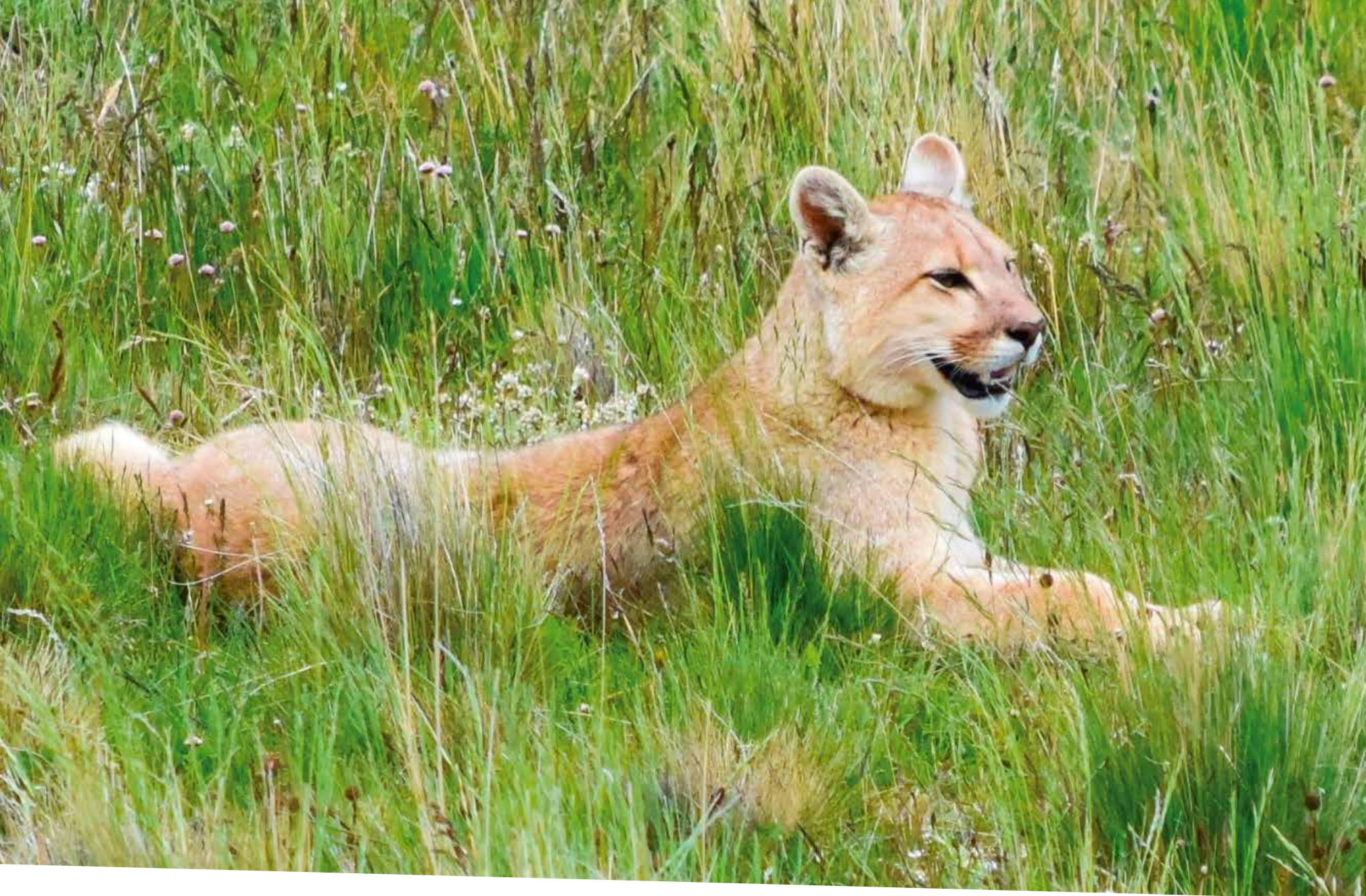
Full day | 8 Hours | Low difficulty

Departing to Torres del Paine National Park through route Serrano, we will visit the vantage points of Lago del Toro, Los Cuernos and Grey Glacier to continue toward Lake Grey, where we will navigate around the glacier for 3 hours. You will be surrounded by an unrivalled landscape of floating icebergs, lush vegetation and majestic mountains. You will witness up close and personal all the wonder, beauty and magnitude of the ice walls, standing at a height of 20 meters. A true spectacle of nature.



IMPORTANT

If you have excursion preferences you can inform us in advance. These will be considered by the guide at the moment of the passengers registration. Confirmation is subject to the physical condition of the passenger, ages of children if there are any, weather conditions and availability.



Remota Patagonia Lodge Ruta 9 Norte, km 1.5, Puerto Natales, Chile / Tel. +56 61 2414040
Santiago office Paris 888, piso 7, Santiago, Chile / Tel. +56 2 23871500
reservas@remota.net / www.remota.cl