

The Cornerstone Bed & Breakfast

A Cozy Urban Inn



3300 Baring Street
Philadelphia, PA 19104

Phone: 215-387-6065
info@CornerstoneBandB.com
www.CornerstoneBandB.com

The Inn Keepers:
Dennis & Liz Bartelme,
Chris & Jules Spaeth

A Family Owned &
Operated Business

On your next visit to Philadelphia, plan to stay at the Cornerstone Bed and Breakfast. Ideally located in the University City District, you will be within walking distance of all that Philadelphia has to offer. Restaurants, shops, historic sites as well as Drexel University, the University of Pennsylvania, the Philadelphia Zoo and the Philadelphia Museum of Art.

We offer you affordable accommodations and the opportunity to enjoy a part of our history. The inn itself is an 1865 Victorian stone mansion which has been updated with modern amenities for your comfort while preserving its architectural beauty.

Our facility accommodates both business and leisure travelers alike.

Relax and enjoy one of our six beautifully appointed rooms and suites each possessing their own unique personality. Each room features a private bath plus everything you would require to rest in comfort.

As a family owned and operated business since 2008, the Cornerstone Bed and Breakfast prides itself on providing you a home away from home for travelers.

Every Room is a Work of Art

Choose from our six uniquely designed rooms. Each room offers you a different atmosphere of rest and relaxation.

THE FAIRMOUNT ROOM



A perfect mix of modern comfort and traditional décor. The king bed can be split into two four-poster twin beds making this room an excellent choice for friends traveling together or a parent traveling with an older child.

THE FRANKLIN ROOM



Beautifully adorned with blues and browns, this corner room offers you a peaceful night in its queen sized bed. The detached private bathroom will delight you with its original stained glass windows and large shower.

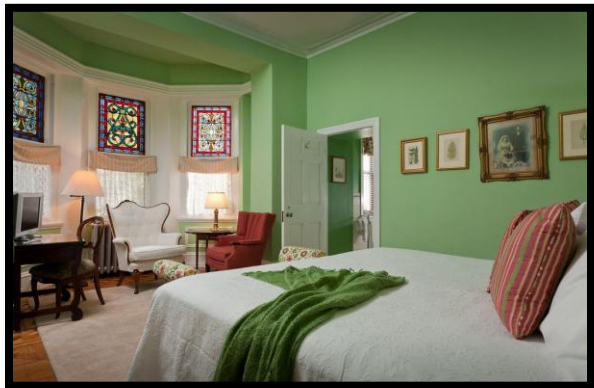
Welcome to your Home Away from Home!

THE FURNESS ROOM



Elegantly decorated in terra cotta, this room offers you a queen sized antique brass bed, oriental carpets, and en suite bathroom. This quiet room affords you the opportunity to shut out the outside world and get some rest.

THE PHILADELPHIAN



This spacious and attractive first floor guest room with king sized bed is decorated in soothing spring green and features three large bay windows with original stained glass and large en suite bathroom.

Enjoy the Suite Life

THE UNIVERSITY SUITE



Decorated in Wedgewood Blue, the University Suite is a charming and cozy room. This spacious suite is divided into two. The main bedroom features a queen sized bed plus a large bay window area that provides a comfortable work space. The living room is equipped with a queen size sleep sofa, beautiful oriental carpet, decorative fireplace, and large TV. The sizable en suite bathroom, located off of the living room, includes a shower and tub combination. This light and bright suite is perfect for business travelers or small families.

A Traveler's Oasis

THE CONTINETAL SUITE



Located on the third floor of our B&B this two bedroom suite is perfect for friends travelling together or a family with children. The larger bedroom offers a soothing floral theme and a queen-sized bed while the smaller room has a double bed. The two bedrooms are joined by a bathroom which features a large-jetted tub, a walk-in shower, and double sinks. A separate sitting room with a flat screen TV and guest refrigerator completes this suite.

Wait There's More

Our Amenities



Free WIFI

Cable TV including HBO & Showtime

Free Street Parking

USB Charging Stations

Toiletries and hairdryers

Gust refrigerator

Gust microwave

Complimentary Coffee & Tea 24 hours

Clock radio's

Air conditioning in the summer

Free luggage storage after check out

A Continental breakfast is served from
7:15 to 8:30 am on weekdays.

A Full breakfast is served from
8:30 to 10:30 am on weekends.

Our Specials

Eastern State Penitentiary Package:

Once the most famous and expensive prison in the world Eastern Sate was built in 1829 the prison still as a historic ruin of a bygone era.

Known for its grand architecture and strict discipline, this was the world's first true "penitentiary," a prison designed to inspire penitence, or true regret, in the hearts of convicts.

Includes complimentary admission for two to Eastern State Prison's daytime tours.

Philadelphia Zoo Package:

Located less than a mile from the Cornerstone Bed and Breakfast, the Philadelphia Zoo's 42-acre Victorian garden is home to more than 1,300 animals. By connecting people with wildlife, the Philadelphia Zoo creates joyful discovery and inspires action for animals and habitats. Cheetahs, hippos, giraffes and much more make the Zoo Philadelphia's leading family attraction with over 1.2 million visitors last year

Includes complimentary admission for two to the Philadelphia Zoo.

Make sure to reference which package you would like when making your reservation to receive the above mentioned tickets.

**Packages cannot be combined with any discounts or gift certificates.*

BOOK TODAY!