

REDUCE * REUSE * RECYCLE * REPEAT

Visitors: Plan your Trip with these Travel Tips

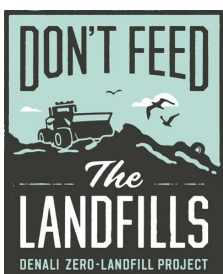
Easy ways for you to minimize trash and waste while you travel:

1. Bring a reusable water bottles and coffee mugs to refill.
2. Bring or buy a reusable bag to carry your souvenirs and supplies.
3. Choose groceries with minimal packaging and recycle as you pack.
4. Opt for paperless tickets and receipts.
5. Recycle aluminum cans, glass, and plastics #1, #2 and #5 in park provided receptacles.

⇒ In some remote areas, recycling services are limited, so please – if you pack it in, pack it out, and always practice ***Leave No Trace Ethics***.

By properly recycling and reducing waste, visitors help conserve resources and preserve parks! Thanks to the Denali Zero-Landfill Project, new recycle bins for aluminum, glass, and plastic #1, #2, and #5 are located at most park visitor facilities and McKinley Creekside Cabins.

- McKinley Creekside Cabins & Café
- campgrounds, visitor centers, ranger stations,
- Alaska Railroad Depot,
- Denali Bus Depot (formerly Wilderness Access Center),
- Riley Creek Mercantile



LODGING
CAFE
BAKERY
ESPRESSO

