



**NATALES**

**EXCURSIONES 2018 / 2019**



**Sierra Baguales**

**Torres del Paine**

**Serrano Glacier**

**Laguna Sofía**

**Mylodon Caves**

**Puerto Natales**

**Isla Focus**

**Canal Montañas**

**Obstrucción**



**NATALES**





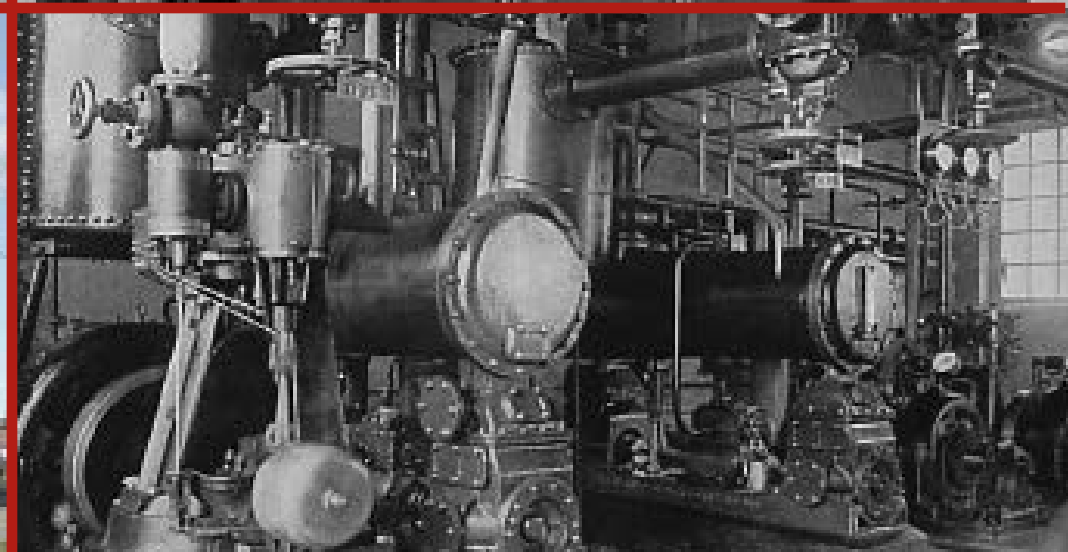
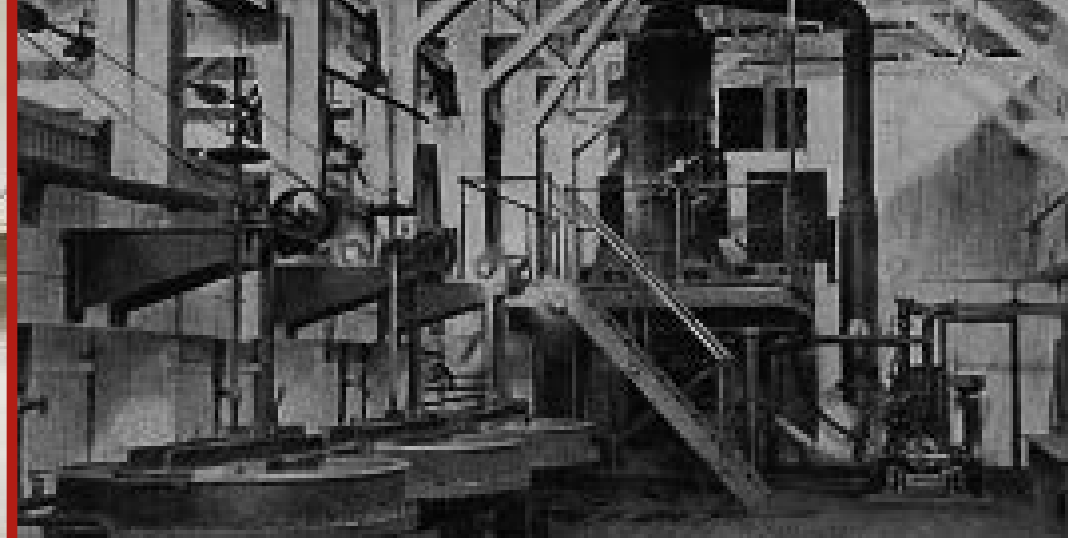
## Puerto Bories Museum

Puerto Bories (Bories Harbor) is located 5km (3 miles) north of Puerto The national monument and museum Frigorífico Bories was a cold storage plant built between 1906 and 1915, and was at the heart of the sheep industry of the Magallanes region for more than six decades and responsible for the creation and foundation of the city of Puerto Natales in 1911. The cold-storage plant was constructed in the 'Post-Victorian Industrial' architectural style and features a number of examples of British machinery which reflect the technology of the beginning of the twentieth century. The cold-storage plant complex presents an excellent opportunity for visitors to learn about the industrial history of the Puerto Natales area.

On this journey you will be able to visit the Frigorífico Bories infrastructure with the garage de las locomotoras (locomotive workshop), the herrería (forge), las calderas a leña (boiler room), las bombas de agua (water pumps), the curtiembre y grasería building (tannery and tallow house) among other places. By visiting this interesting location you will be able to witness the huge effort of a group of men who, regardless of extreme weather conditions and geography, were able to build a future, generating electricity and a cooling system based on steam. Visiting this private collection will help us to understand the origins and development of this area, its culture and traditions which still remain today.

- Walking Distance
- \$5.000 Entrance











## Puerto Natales

### Land of Pioneers

Puerto Natales, access point to the famous Torres del Paine National Park, is located 247 kilometres north of Punta Arenas. This city is located on the southernmost end of the country, by the Canal Señoret shore, between Almirante Montt Gulf and Last Hope Sound, in the XII Magellan Region, and the Chilean Antarctic. It is the capital of the Natales area and the Last Hope province, named by the explorer Juan Ladrillero whose 'last hope' of finding a western entrance to the Magellan strait was during one of his final trips in 1557. Our visit will start in the coastal area by the shore of Canal Señoret where we will enjoy the beautiful landscape from the Costanera Pedro Montt promenade, usually visited by birds of the area such as black-necked swans. We will continue our journey along the coast until we reach the fishermen pier and fish market. Heading towards the central part of the city, we will visit some of the more significant constructions such as the Municipalidad building, built during the Magellan cattle booming times and financed by the "Sociedad Explotadora Ganadera de Tierra del Fuego". We will learn about the history of Puerto Natales during a visit to the Museo Histórico Municipal, as well as having the opportunity and privilege of meeting the locals and artisans, getting to know their work, traditions and workplaces.

- SELF



## **Puerto Natales**

### Land of Pioneers

#### Around Puerto Natales

Puerto Natales, access point to the famous Torres del Paine National Park, is located 247 kilometres north of Punta Arenas. This city is located on the southernmost end of the country, by the Canal Señoret shore, between Almirante Montt Gulf and Last Hope Sound, in the XII Magellan Region, and the Chilean Antarctic. It is the capital of the Natales area and the Last Hope province, named by the explorer Juan Ladrillero whose 'last hope' of finding a western entrance to the Magellan strait was during one of his final trips in 1557. Look along the border of the tranquil waters of Canal Señoret until reach the outskirts of the city where a prehistoric mylodon replica. Then visit Costanera Pedro Montt, where you will enjoy a spectacular view and then visit the fishermen pier.

Plaza de Armas, the historic Municipal Museum and the Municipal building, which was built during the Magellan cattle fever, mixing a British Post-Victorian style with the traditions of this area. We recommend going to the local artisans store, near the main square.







## Torres del Paine

### Overland

The Torres del Paine National Park is part of the National System of the Protected Wildlife Areas of Chile. It is located 154 km from Puerto Natales. The park was created on 13th May 1959 and declared as a Biosphere Reserve by Unesco in 1978.

We will head north from Puerto Natales, reaching Villa Cerro Castillo located one hour from HD Hotel. This is a village surrounding an old estancia that belonged to the Sociedad Explotadora Tierra del Fuego, devoted to sheep farming. We will stop at the village for fifteen minutes and then continue our journey to Lago Sarmiento, where we will be able to observe the typical fauna of this area: ñandúes and herds of guanacos. The lake is renowned for its striking deep blue colour. We will enter the Torres del Paine National Park at Portería Laguna Amarga. Once inside the park, we will visit different viewpoints with unique perspectives of the Macizo Paine. We will take a thirty-minute walk to visit the Salto Grande waterfall, where we will be able to see the Cuernos del Paine (Paine Horns). Finally, we will reach Lago Grey, where we will start a one-hour trek, with a view of Glacier Grey and icebergs. We will return by the Mylodon Cave route, where we will have panoramic views of the Macizo Paine

- Duration: Full day





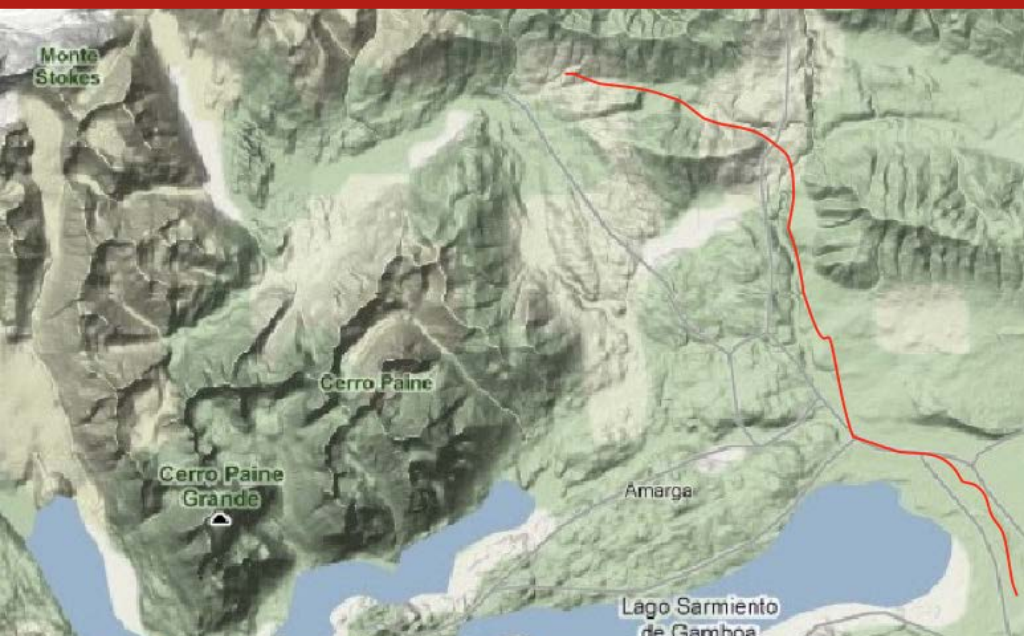












## Torres del Paine

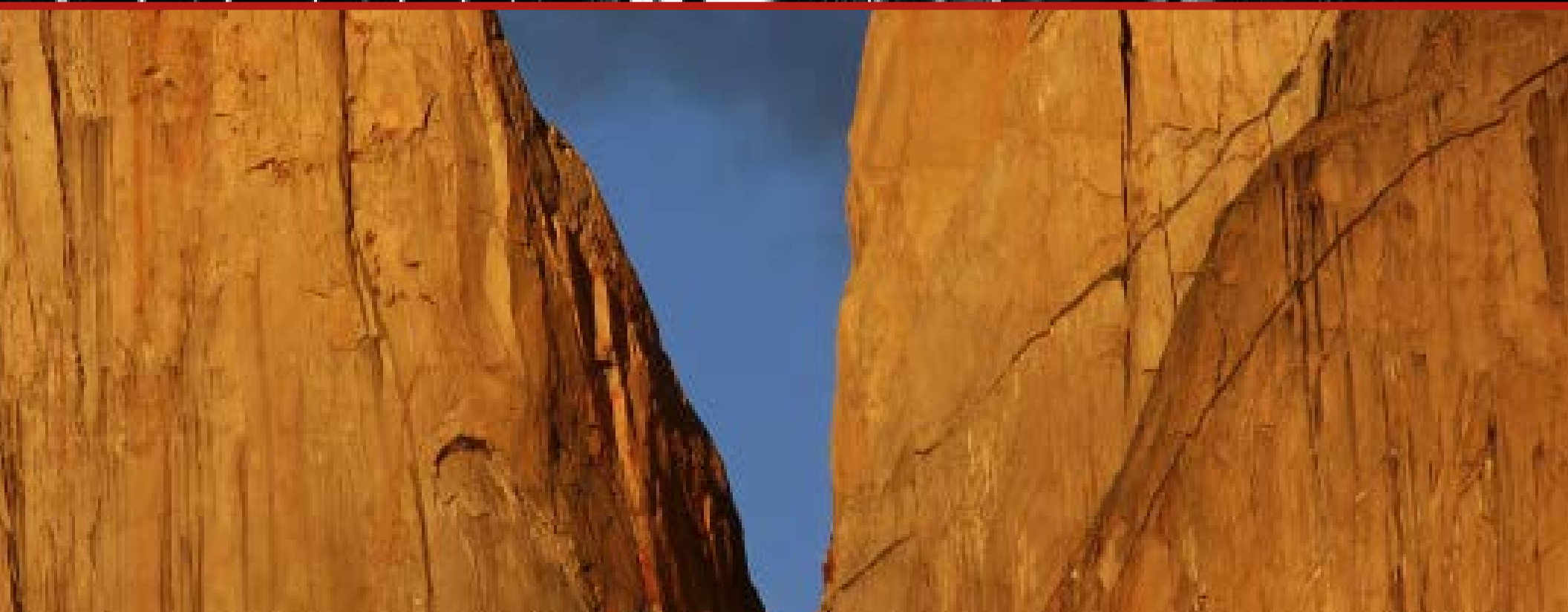
### Trekking the foothills

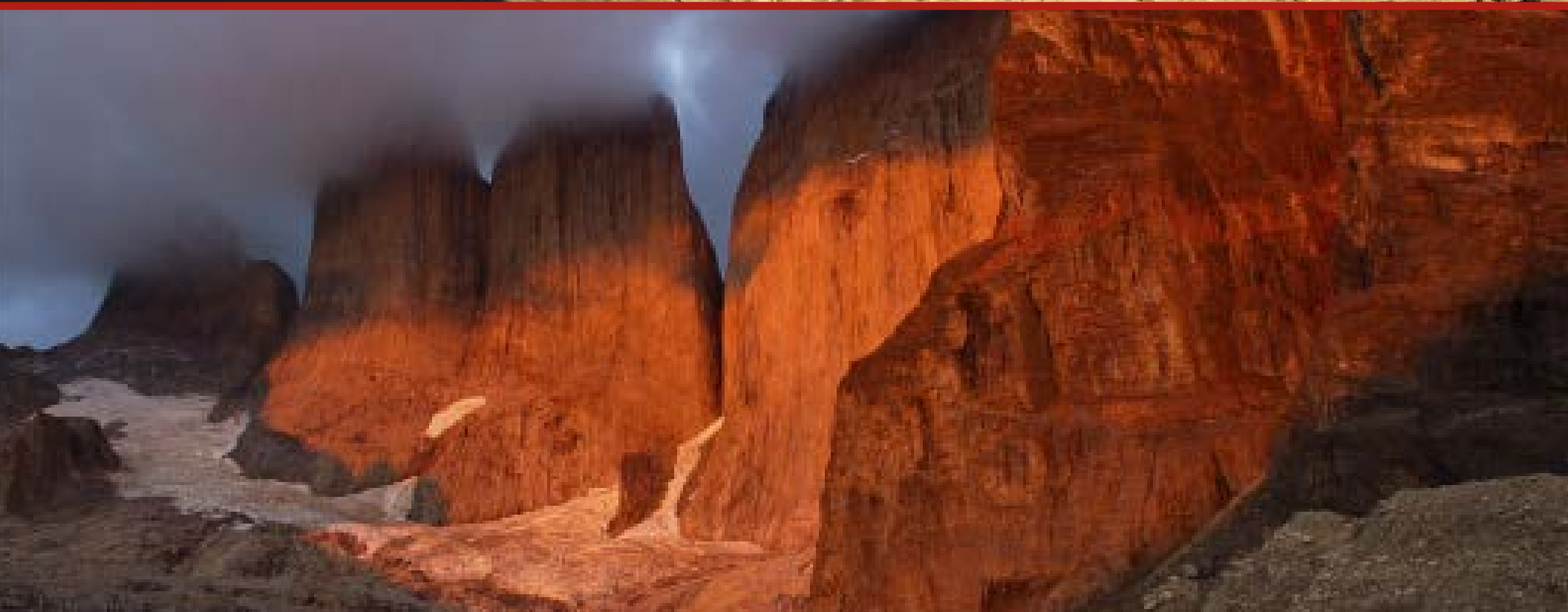
Torres del Paine National Park is part of the National System of Protected Wildlife Areas in Chile. It is located 112 km from Puerto Natales. The park was created on 13th May 1959 and declared as a Biosphere Reserve by Unesco in 1978. The Torres del Paine (Paine Towers) are gigantic granite monoliths, which through time suffered erosion from glaciers, fluvial and Eolic.

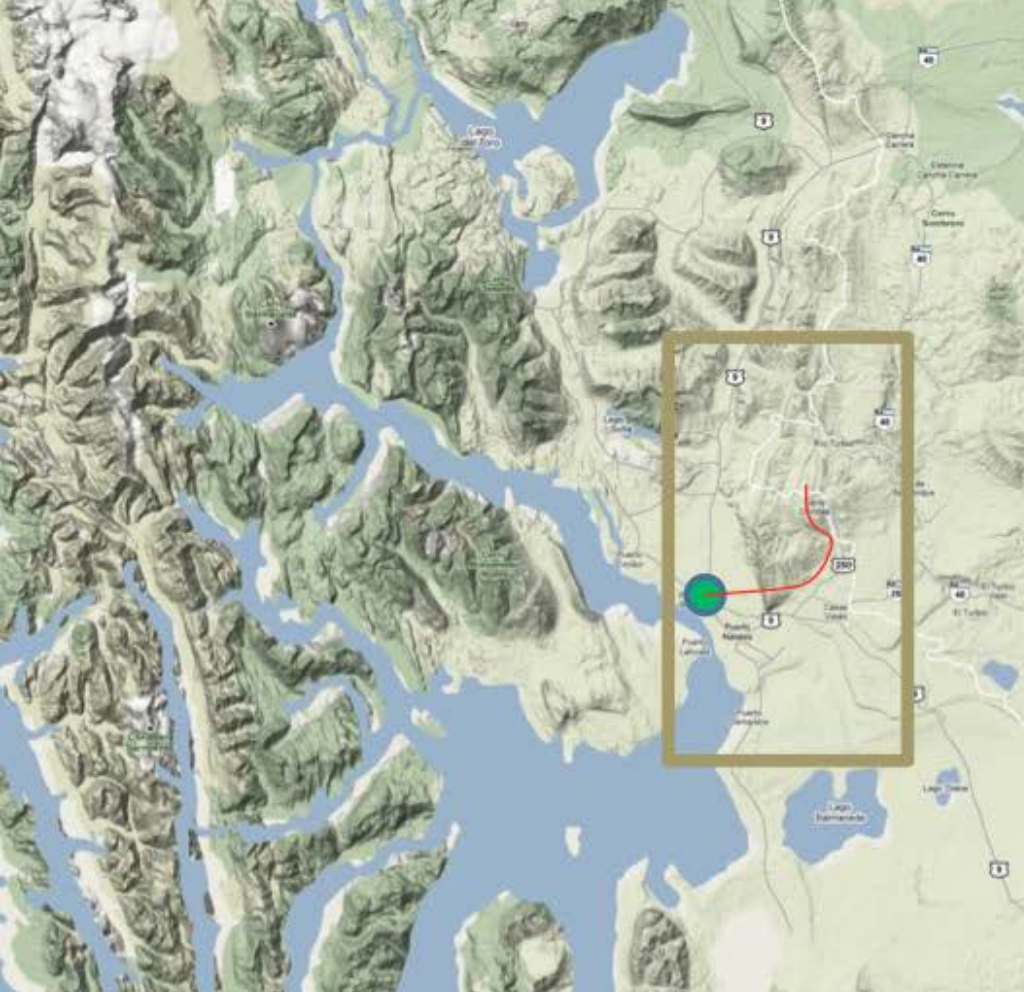
Our trekking starts at Valle Ascencio, by the Monte Almirante Nieto foothill, until we reach the Refugio Chileno. We will then cross a nothofagus forest and finish our ascension by reaching a moraine of large rocks which will take us to the base of Torres del Paine. From this point we will be able to observe the Torre Norte (2600m), Torre Central (2800 m) and Torre Sur (2850 m) in all its splendour, weather permitting.

- Trekking time to the base of Las Torres: four hours approximately
- Duration: Full day.
- Programme includes: road transport, Guide
- Clothing requirement: warm comfortable, windproof/waterproof outer shell.
- Suggested equipment: walking shoes and poles
- Activity level: High
- Technical level: Medium
- \$50.000









## Horse Riding

### Ultima Esperanza Dorotea

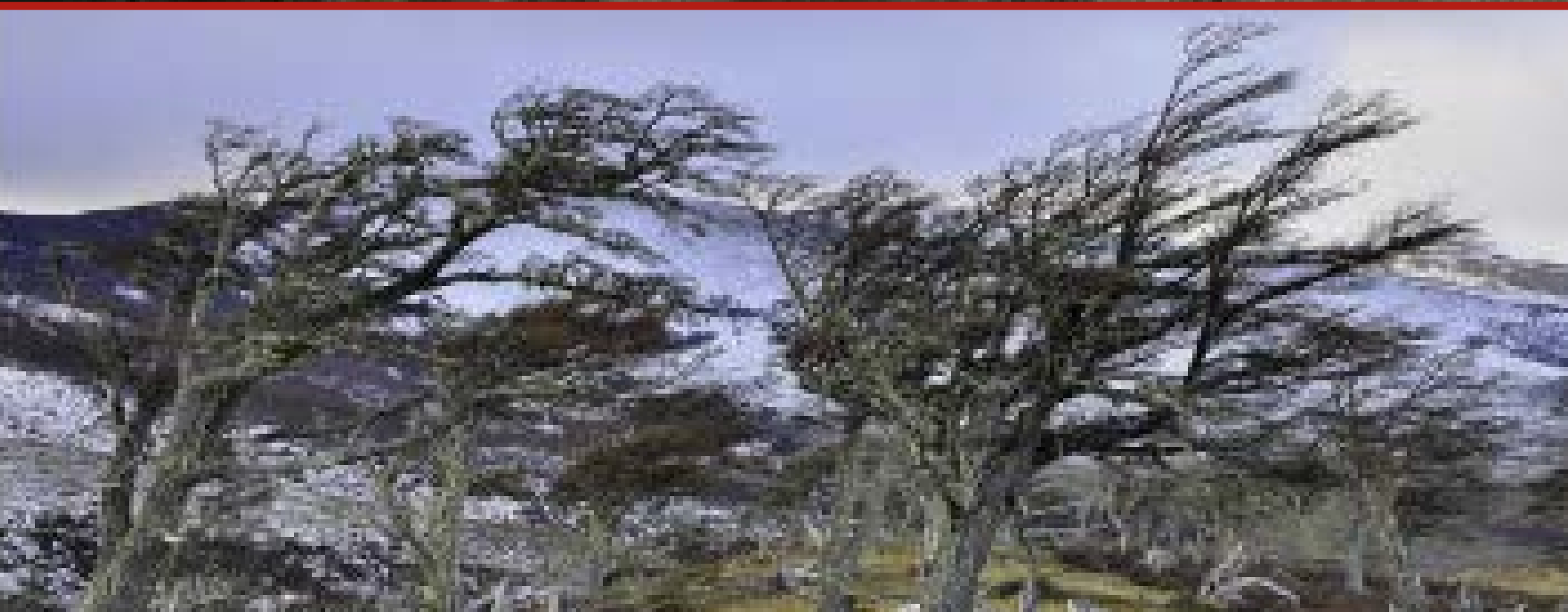
From the summit you will be able to see Puerto Natales and Seno Ultima Esperanza or Last Hope Sound during this half day hiking excursion.

This spectacular viewpoint is located eleven kms from Puerto Natales, driving on Route 9 South on Sierra Dorotea, and was formed of sedimentary rock approximately 72 million years ago. The mirador or viewpoint is located 600 m above sea level from which you will be able to see the glacier origin landscape that surrounds Puerto Natales.

- Duration: Half Day
- Clothing requirement: comfortable, windproof/waterproof outer shell.
- Suggested equipment: Trekking shoes.
- Best time to visit: All year-round
- Activity level: Medium
- Technical level: Basic
- \$40.000











## Trekking to the Mylodon Caves

The Mylodon Caves is located twenty-five kms northeast from Puerto Natales and three kms north of fjord Eberhard. The first eighteen kms are paved road and the remaining, gravel.

The caves are considered to be one of the oldest and most important archaeological and paleontological sites in Southern Patagonia. The caves provide evidence of a human presence from 12.000 BC associated with the extinct mylodon.

Hiking excursion will start at Cueva Chica (Small Cave) and then head to the Cueva del Medio (Middle Cave), finishing at Cueva del Mylodon or Cueva Grande (Mylodon Cave or Big Cave) of a stunning scale and dimension: two hundred metres deep, eighty metres wide and thirty metres high.

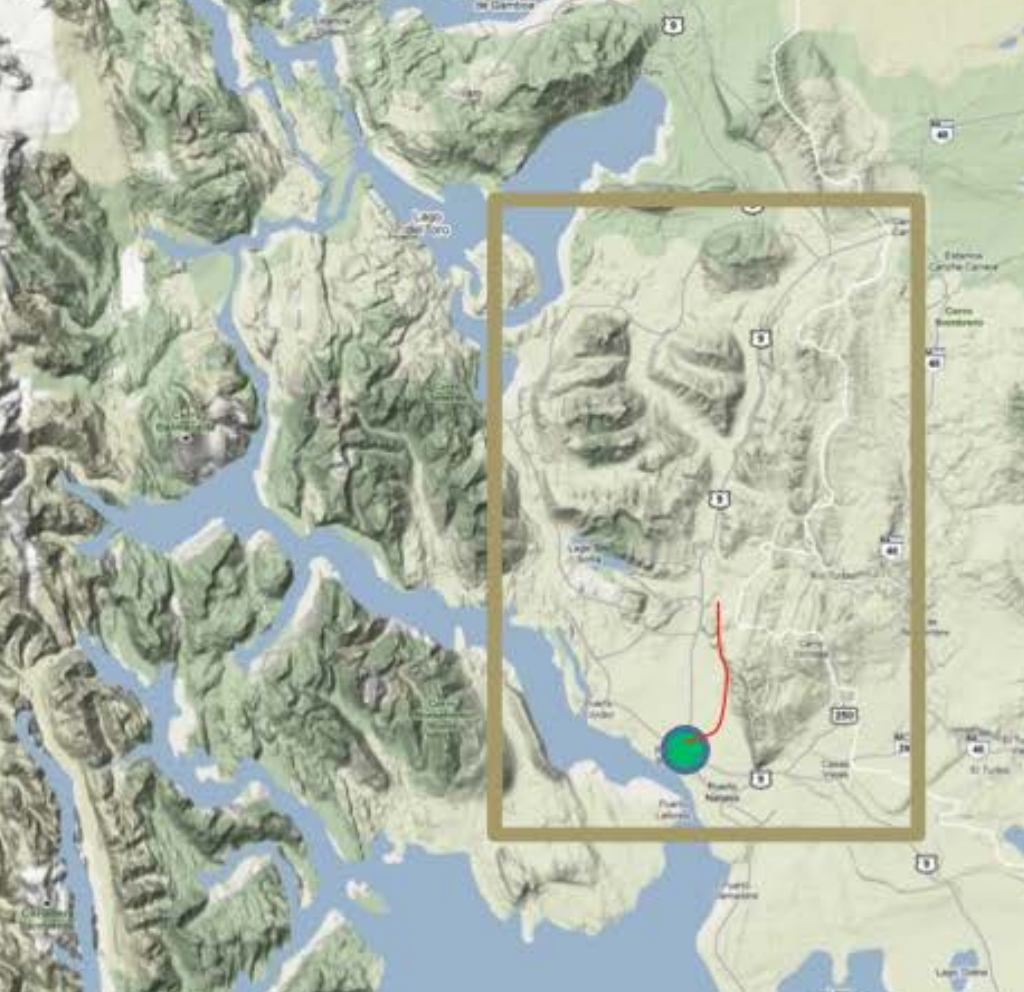
- Travel time from hotel to starting point: forty minutes.
- SELF











## Trekking and Watching Condors

### Lake Sofia / Cerro Benitez

Laguna Sofia (paleolago) and Cerro Benitez are located twenty-four kms from Puerto Bories, a cliff with perching points for condors on the rock face dominating Laguna Sofia. The climb will take approximately one hour and thirty minutes. From the summit will be able to observe the mighty condors, amongst the world's largeyou st birds, as well as the Eberhard fjord and Canal Señoret and Cerro Benitez which are all part of the paleontological site that comprises the Mylodon Cave and rupes-trian paintings.

- Travel time from hotel to Laguna Sofia: twenty-five minutes
- Duration: Half day
- SELF MADE PROGRAM
- Clothing requirement: comfortable, windproof/waterproof outer shell.
- Suggested equipment: Gloves, eyewear
- Best time to visit: All year-round
- Activity level: Medium
- Technical level: Basic-Medium.

















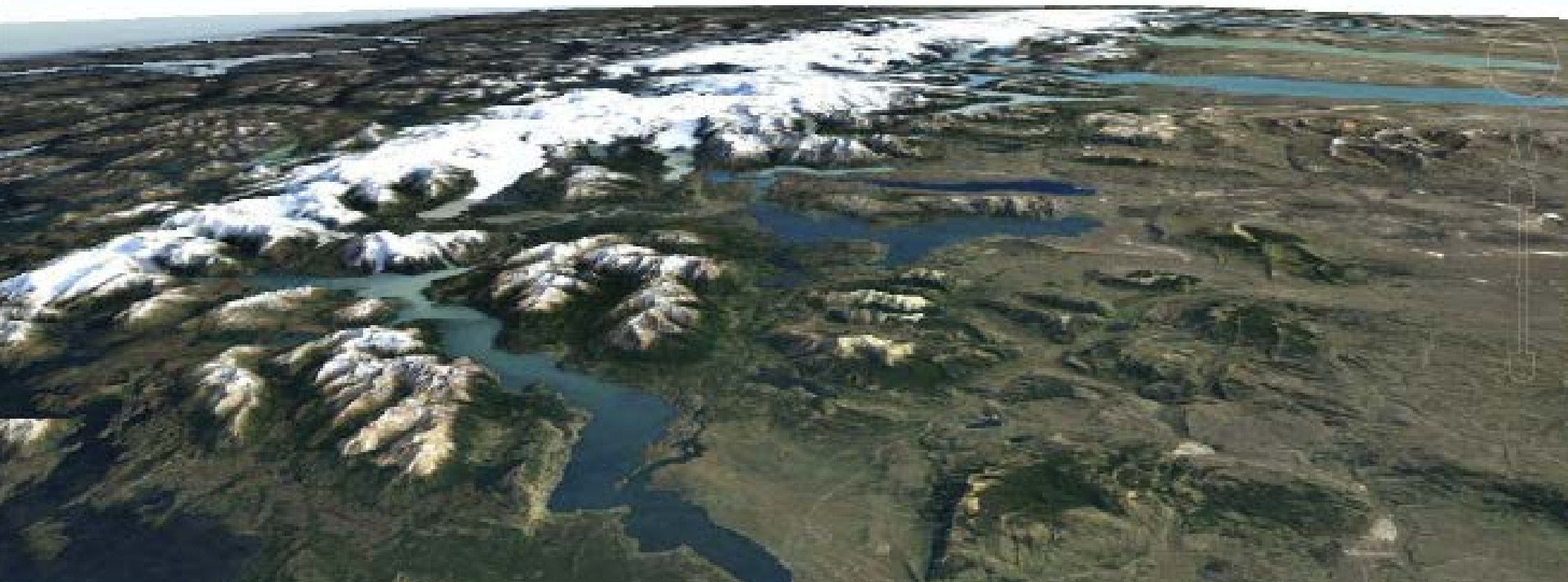
## Sailing around the Patagonia Fjords: Serrano and Balmaceda Glaciers

Enjoy the opportunity of sailing through the Patagonian Fjords reaching Last Hope Fjord and visiting Glaciers Balmaceda and Serrano. Our journey starts at the pier where the boat will be ready to take us sailing for approximately two hour and fifteen minutes, allowing us to observe colonies of blue-eyed cormorants and sea lions.

We will then disembark in Puerto Toro (Bernardo O'Higgins National Park). After a fifteen-minute stroll we will reach the mirador or viewpoint overlooking Glacier Serrano. We will continue hiking for another thirty minutes towards a second viewpoint, which overlooks Glacier Serrano, bordering a lagoon with icebergs that come from the base of the glacier. In the return, we will have a nice lunch at Estancia Perales.

Note: sailing according to weather conditions

- Duration: Full Day
- Programme includes: Boat, ticket entrance, estancia barbecue
- Clothing requirement: warm comfortable, windproof/waterproof outer shell.
- Suggested equipment: trekking boots, leg warmers, pole and binoculars.
- Activity level: Basic/Medium
- Technical level: Basic.
- \$95.000











NATALES