

MEETINGS & EVENTS

Cowley Manor is the contemporary country house hotel, with 30 bedrooms, an award-winning spa, stunning restaurant, meeting and event spaces with natural light and sweeping views, all set in 55 acres of Grade II listed gardens. Located in the heart of the Cotswolds between Cheltenham and Cirencester, we are under a two hour drive from London, and 90 minutes by rail.

From small meetings and away days to large and opulent parties, we have the space and flexibility to accommodate a wide range of business & private events.





EVENT SPACES

The Study

Up to 14 people seated
Room Hire: Full day - £300, Half day - £150

With original period features and comfortable seating for up to 14 people at one table, the Study is an ideal space for meetings, breakfasts, lunches and dinners. During the summer months, the adjoining terrace makes a lovely spot for pre-dinner drinks.

The Garden Room

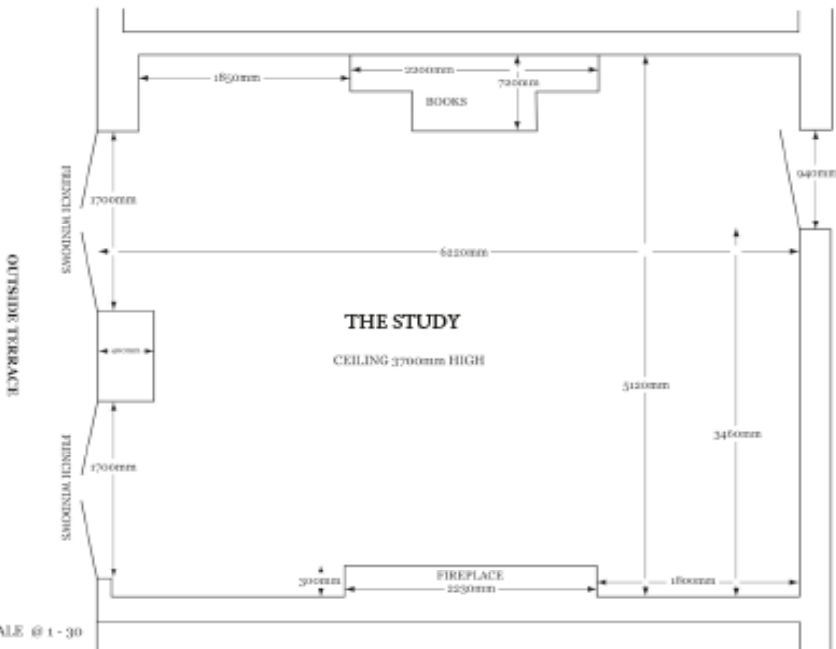
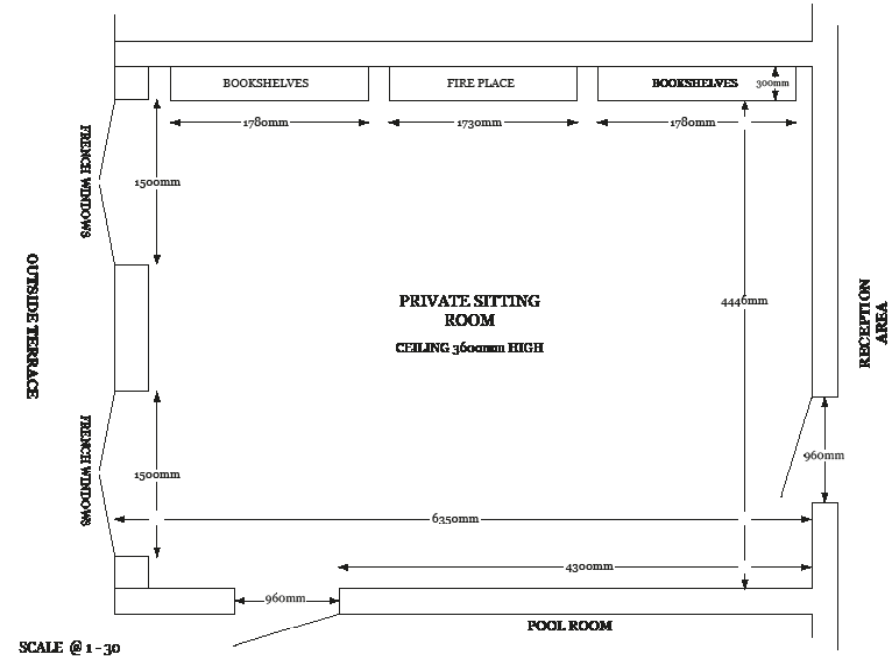
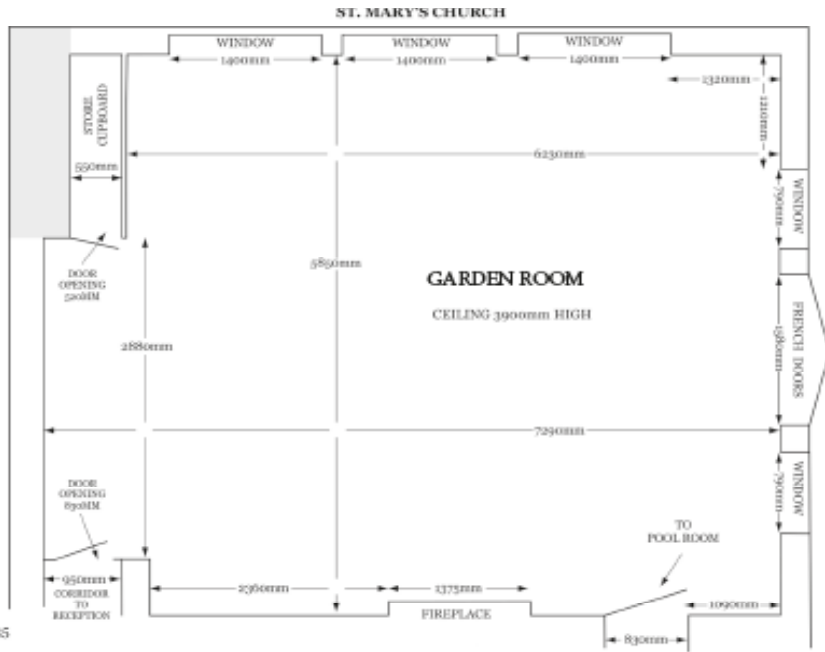
Up to 50 people standing, 30 seated at 3 round tables and 14 seated at one table. Room Hire: Full day - £500, Half day - £250

The Garden Room has views of our 12th century church, upper lake and grounds, making it a particularly inspiring space for brainstorming, meetings and away days. The room enjoys easy access to the adjoining Billiard Room and Library should additional breakout space be needed.

In the evenings it is a popular room for private drinks and dinner parties.



FLOOR PLANS



MALT

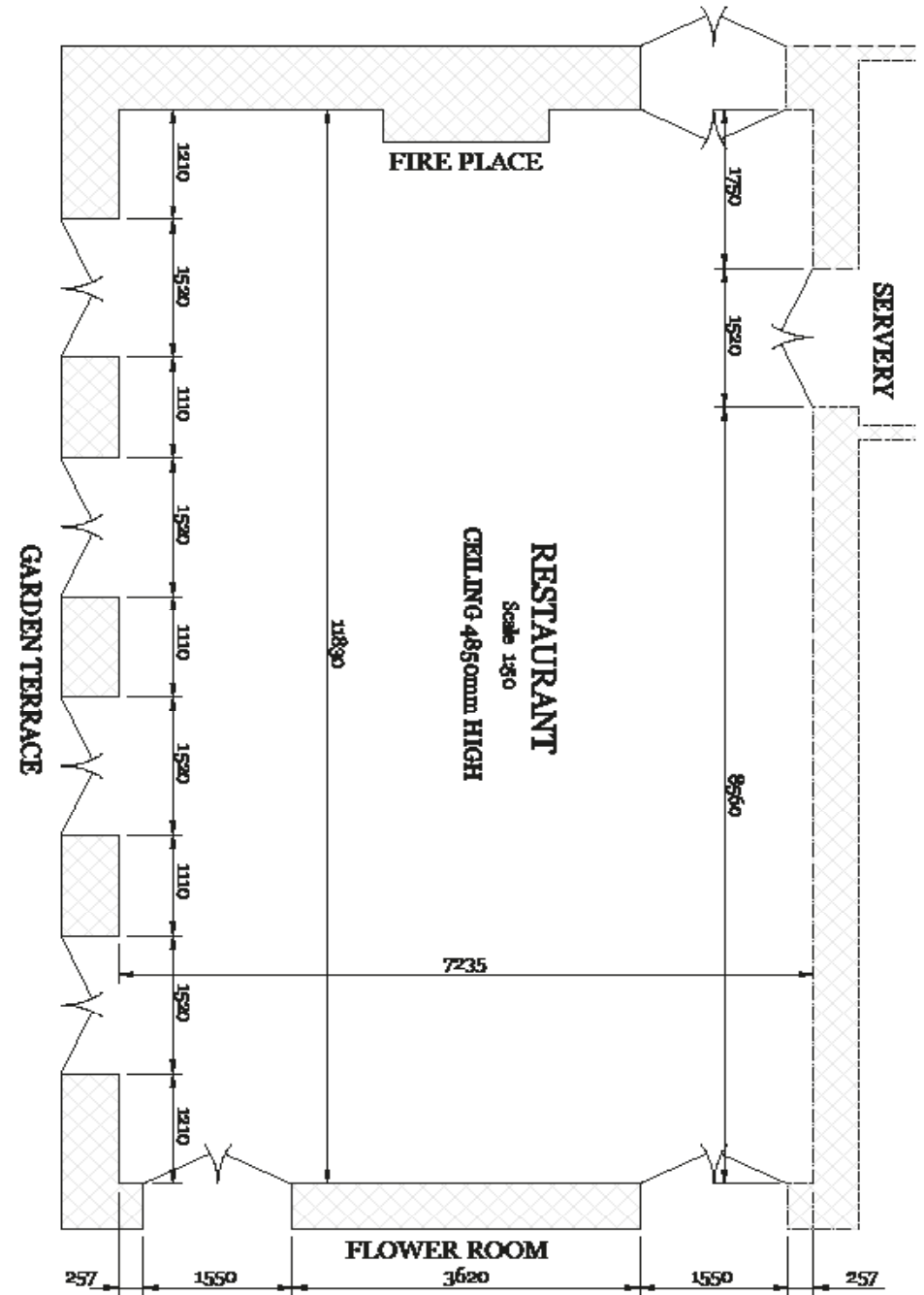
Reflecting Cowley's own unique blend of contemporary design and home-from-home comfort, MALT is our main restaurant and can be hired exclusively for events.

Ideal for larger groups not wanting the run of the house, The Restaurant can be yours from midday till 5.30pm for up to 72 guests.

Alternatively during an Exclusive Use, The Restaurant is yours to use until late.



FLOOR PLAN



MEETING ROOM CAPACITIES

THE STUDY

Boardroom	Cabaret Style	Theatre Style	Private Dining
14 people	N/A	N/A	20 people

THE GARDEN ROOM

Boardroom	Cabaret Style	Theatre Style	Private Dining
14 people	21 people	40 people	30 people

[ENQUIRE HERE](#)



THE PRIVATE SITTING ROOM

Boardroom	Cabaret Style	Theatre Style	Private Dining
6	N/A	N/A	8

MALT

Boardroom	Cabaret Style	Theatre Style	Private Dining
N/A	60 people	90 people	80 people



EXCLUSIVE USE EVENTS

Take over Cowley, including all 30 bedrooms, the gardens, Main House & Stable Block for a truly memorable event. You and your guests can enjoy full use of the facilities at C-Side Spa with any treatments they would like to book at 20% off during their stay.

Your exclusive use event can include the following, although completely bespoke options are always available:

- Prosecco & canapés on arrival
- 3 course dinner with ½ bottle of wine per person
- Tea & coffee
- Champagne
- Midnight munchies

Cost: £5000 or approximately £83.50 per person based on 60 guests

ROOMS

Split between the Main House & the Stables, all of our rooms are generously appointed, with luxurious amenities and all boast separate showers and double wash basins. Accommodation cost for all 30 bedrooms is to be paid by guests and/or the host:

MONDAY
to
THURSDAY

November - April: £8,215
May to October: £11,455

FRIDAY
&
SATURDAYS

£11,455 per night
Minimum 2 nights





DELEGATE PACKAGES

Our delegate packages are available for a minimum of 4 people and include room hire, catering and stationery. With original period features, wonderful garden views and comfortable seating, both our Garden Room and Study are the perfect spots for meetings, brainstorming sessions and away days.

GOOD

From £55 per person

- Coffee, tea, juice & pastries on arrival
- Mid-morning coffee
- Working lunch: sandwich, soup & fries
- Afternoon tea & cake
- Room hire
- Stationery & flip chart
- Bottled water

BETTER

From £65 per person

- Coffee, tea, juice & pastries on arrival
- Bacon butties
- Mid-morning coffee
- Working buffet lunch
- Afternoon tea & cake
- Room hire
- Stationery & flip chart
- Bottled water

GREAT

From £75 per person

- Coffee, tea, juice & pastries on arrival
- Bacon butties
- Mid-morning coffee
- 3 course lunch
- Afternoon tea & cake
- Fruit Bowl
- Tassimo coffee machine
- Selection of soft drinks
- Room hire
- Stationery & flip chart
- Bottled water

24 Hour Delegate Rate

Our 24 Hour Delegate rates are available Sunday to Thursday and include our 'Good' Day Delegate package as well as overnight accommodation with a three course dinner in MALT, full breakfast and access to all spa facilities.

Room rates, inclusive of a three course dinner at MALT, full breakfast and access to C-Side:

- | | |
|--------------------|------|
| • Good Room | £280 |
| • Better Room | £320 |
| • Great Room | £360 |
| • Exceptional Room | £410 |
| • Outstanding Room | £540 |
| • Best Room | £640 |

PRIVATE DINING AND ENTERTAINING

From elaborate dinner parties and cocktail masterclasses to family gatherings and champagne afternoon teas, the Garden Room and Study play host to all sorts of events. Let our team help you along with even the smallest of details to create a truly memorable event.



ELEGANT ENTERTAINING

With seating for up to 30 in the Garden Room and up to 20 in the Study, our private dining options provide special spaces for life's important get togethers.

Endlessly versatile, our private rooms are ideal for group afternoon teas, anniversary lunches, birthday suppers with tasting menus, or social canape parties.

ROOM HIRE

THE STUDY
THE GARDEN ROOM

£150, half day
£250, half day

£300, full day
£500, full day



EATING

Food is at the heart of any great celebration. We want to make sure that every bite for your event will be one to remember. Our food is locally sourced, seasonal and delicious.

We can either suggest tried and tested favoured menus, or can create something special just for you. You are welcome to meet with our Head Chef to discuss what you'd like so we can make the lunch/dinner spot on for you and your guests.



TEAM BUILDING ACTIVITIES

We have terrific relationships with companies who specialize in executing fun and inspiring team building activities and exercises.

Below is a list of recommended companies and activities, some of whom provide favourable rates to our guests. We would be happy to arrange any of these activities on your behalf, or if preferred, make an introduction.

OUTDOOR ACTIVITIES IN THE GROUNDS

In the summer months our grounds can be utilised for a variety of outdoor events including whacky races, a pop-up fairground, bungee runs and gladiator duels.

THE FOODWORKS COOKERY SCHOOL

A firm Cotswolds favourite, Foodworks combine the very best Chefs, produce and industry know-how with a fun, state of the art cooking environment, in a beautiful setting.

CHEESE & WINE PAIRING

Held in the Study for a minimum of 10 people, this is a delightful and engaging activity, ideal for corporate entertaining.

COCKTAIL MASTERCLASSES

We love rolling up our sleeves and getting behind the bar! We will happily organise a class on your behalf using either local mixologists or our very own team of talented bar members!

THE SCREENING ROOMS

Whether it's a corporate presentation, or a private film screening, we can organise the private hire of Cheltenham's premier boutique cinema. Enjoy a film in first class surroundings with waiter service.

WATERMARK – FUN ON THE WATER

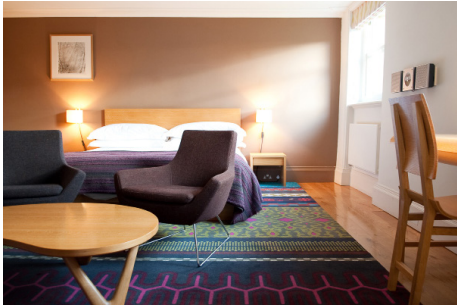
The Watermark lakes provide one of the top carp and trout fishing facilities in the UK. For guests of Cowley Manor we have negotiated special 'mates rates' for anyone wanting to fish on the lakes.



BEDROOMS AT COWLEY MANOR

Our 30 bedrooms are light and spacious, fitted with handmade furniture and fabrics created by British designers. All have airy bathrooms with huge bathtubs and showers. Half of our rooms are in the Main house, the other half are in the Stable Block.





Outstanding Room

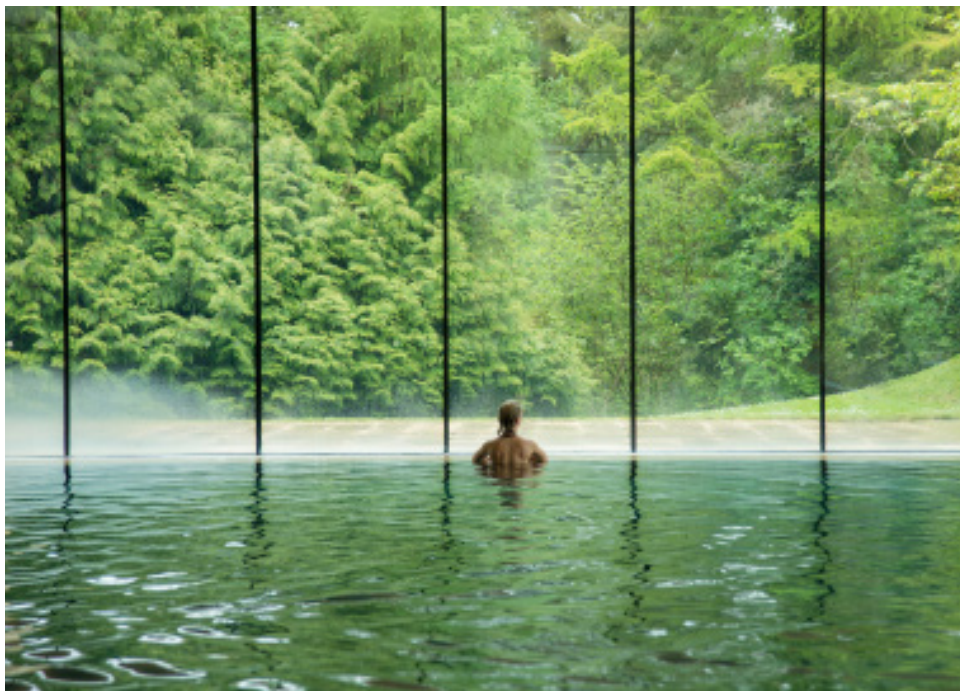


Best Room



C-Side Spa

Our award-winning spa has two spectacular pools: a slate-lined indoor pool and an elegant outdoor pool, both heated all year round. C-Side also has a gym, steam room and sauna. There are four treatment rooms, enabling the therapists to offer a full range of therapeutic and advanced treatments.



CONTACT US

Please feel free to contact us on the details below and ask to speak with our Events Planner:

+44 (0) 1242 870 900
events@cowleymanor.com
www.cowleymanor.com

[ENQUIRE HERE](#)

Cowley Manor
Cowley nr Cheltenham
Gloucestershire
GL53 9NL

