



CEDARBROOK  
LODGE



*Delightfully Unexpected*



**Cedarbrook Lodge**, located just five minutes from Sea-Tac International Airport, is a world-class hotel and event destination. On 18 lush acres including protected wetlands, your urban oasis with comprehensive amenities and outstanding guest service awaits for the ultimate in productivity and relaxation!

From an intimate corporate retreat or a large-scale meeting, to a reception in the garden or on the impressive Evergreen Lawn, Cedarbrook Lodge has the perfect space to suit your next event. And, with incredible food and beverage from the acclaimed Copperleaf Restaurant team, your large or small gathering is sure to impress.

Set just steps away, 167 guestrooms designed for convenience and comfort ensure your guests can unwind in true Northwest style.

# Guestrooms

**R**elax in the quintessentially Northwest style of Cedarbrook's 167 guestrooms, located just steps from our meeting and event spaces. All rooms feature contemporary and functional design, floor-to-ceiling windows, Simmons® Beautyrest plush pillow top bedding, original artwork, your choice of luxurious pillows, and more.

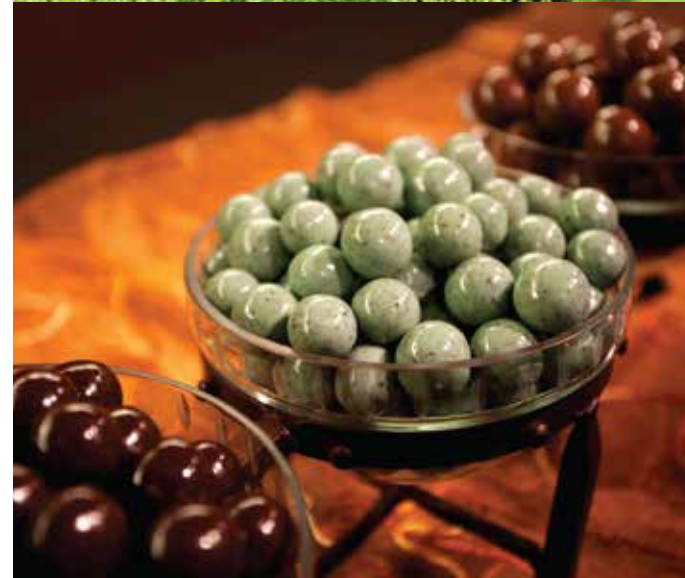


# Amenities

**A**ll overnight guests of Cedarbrook Lodge are welcome to take advantage of incredible complimentary amenities during their stay.

Fuel up with Northwest-inspired breakfast, sneak in a workout pre- or post-meeting at the 24-hour Fitness Center or through the walking paths surrounding the Lodge, and unwind in Living Rooms stocked with refreshments, snacks and board games.

And, our shuttle service to and from the airport makes getting to Cedarbrook a breeze.





## *Meetings and Events*

**T**he team at Cedarbrook makes planning any meeting or event easy. Our experienced planners ensure your conference, awards dinner, board meeting, or reception are executed flawlessly and memorable for all in attendance.

Large floor-to-ceiling windows bring the outdoors in and offer a setting like no other, encouraging productivity and creativity. And, state-of-the-art audiovisual will bring your event to the next level. Cedarbrook is a hidden gem that compels you to come back time and time again.



## *Delectable Choices*

**U**pgrade your event with customized catering options for all types of gatherings.

For those seeking value and convenience, Cedarbrook's popular ***Complete Meeting Package*** is an excellent choice. Including all your meeting essentials, parking, Northwest-inspired breakfast, lunch buffet, morning and afternoon breaks, and more, the CMP takes the stress out of planning.

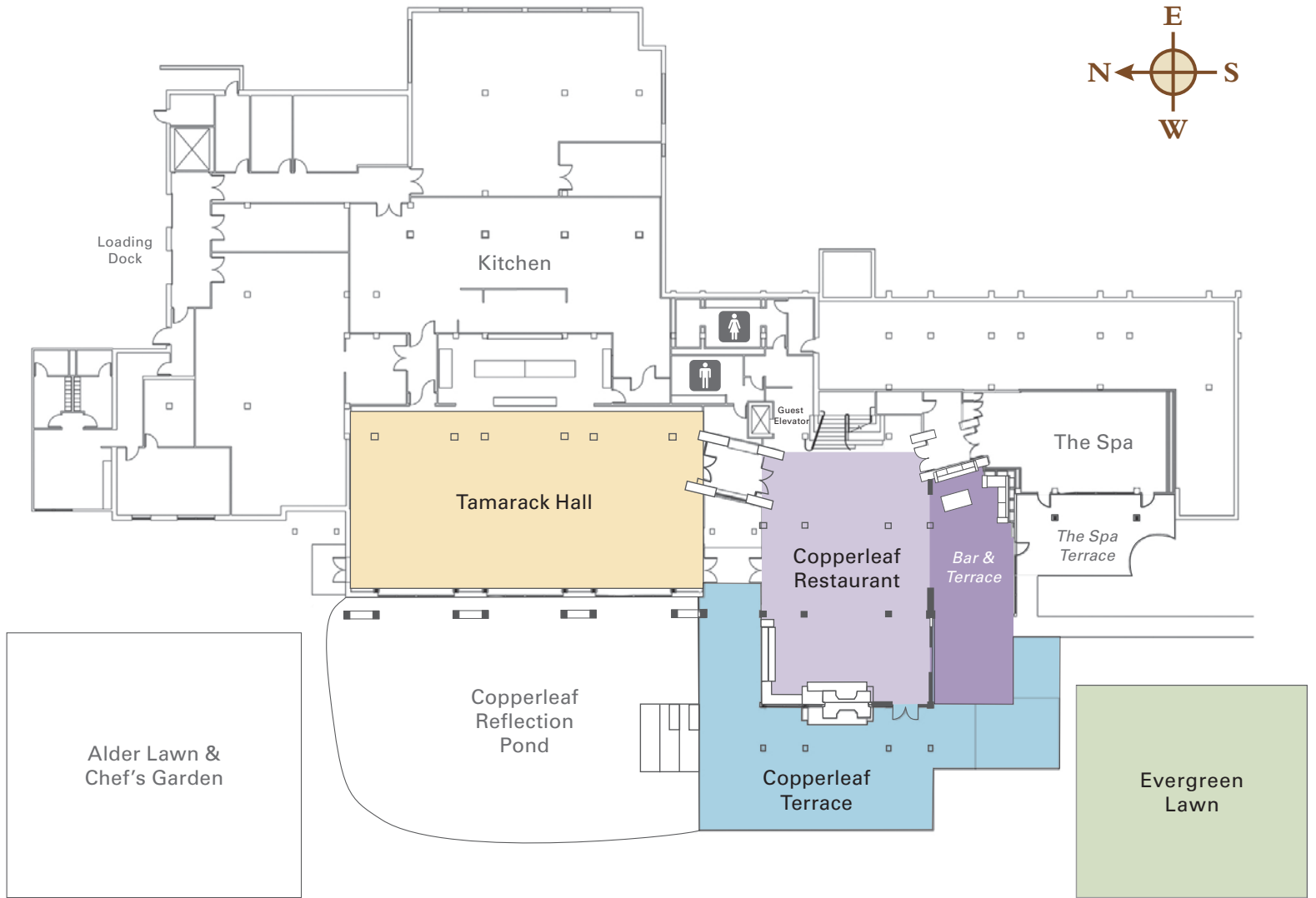




## *Big Cedar, First Floor*

**W**ith seating for up to 200, Tamarack Hall is the perfect space for your next large gathering. Featuring floor-to-ceiling windows, and just steps from the ponds and Chef's Garden, the first floor of Big Cedar blends nature with the indoors.



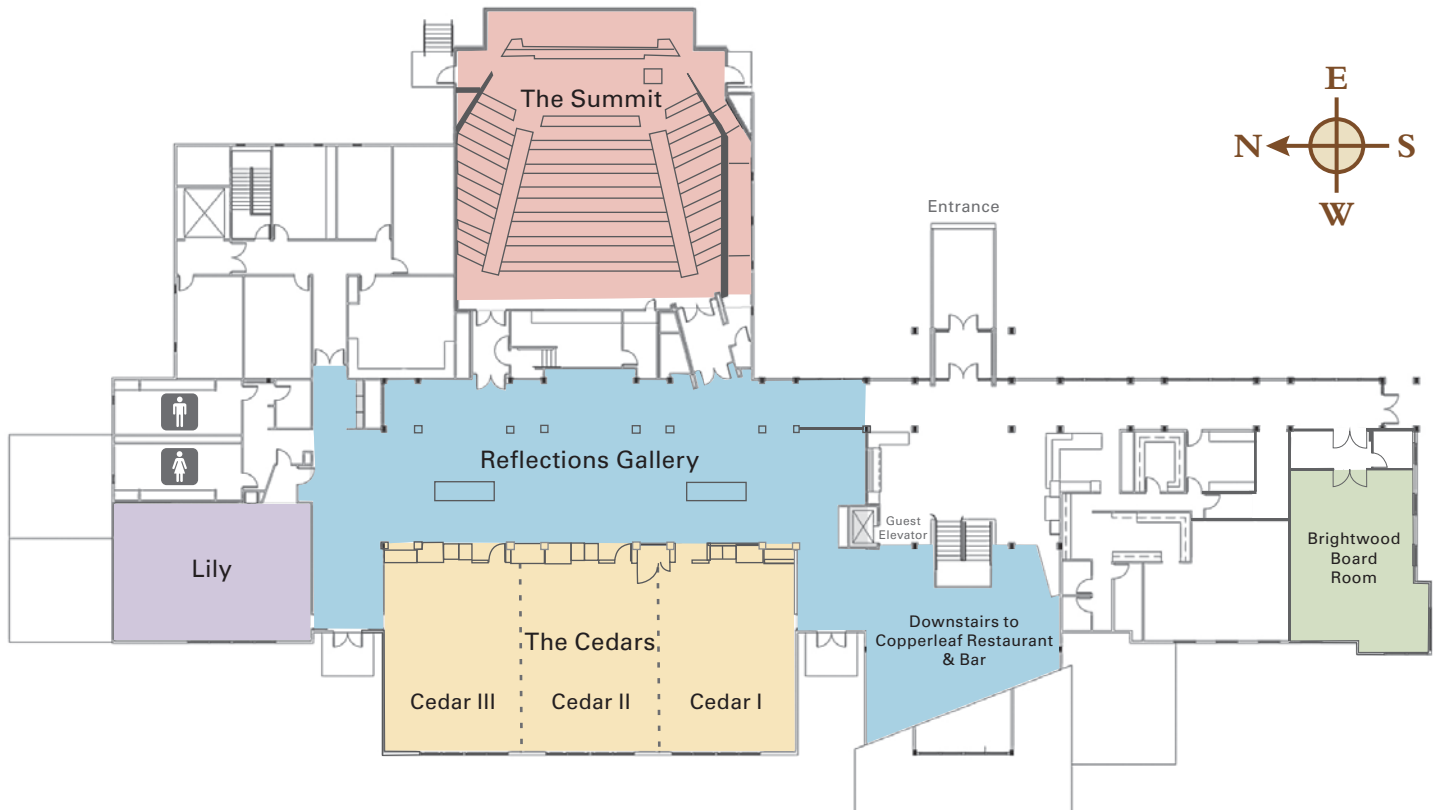


<b>BIG CEDAR – FIRST FLOOR</b>	Cocktail Seating	Banquet Seating	Theater Seating	Classroom Seating	Conference Seating	U-Shape Seating	Width/Length	Square Feet	Ceiling Height
Tamarack Hall	300	200	225	150	72	64	84' x 43'	4,380	Variable
Copperleaf Terrace	80	40	X	X	X	X	Irregular	3,126	X
Evergreen Lawn	200	100	200	X	X	X	Irregular	1,800	X



## *Big Cedar, Second Floor*

**F**rom executive team meetings in our unique Brightwood Boardroom to cocktail hour in Lily or a large team retreat in the Cedars, the second floor of Big Cedar is filled with natural light – great for inspiring creativity and productivity. The Reflections Gallery, featuring skylights and tall ceilings, is the ideal spot for food and beverage stations or a post-meeting cocktail hour.



<b>BIG CEDAR – SECOND FLOOR</b>	Cocktail Seating	Banquet Seating	Theater Seating	Classroom Seating	Conference Seating	U-Shape Seating	Width/Length	Square Feet	Ceiling Height
Cedar I	75	60	75	50	32	24	28' x 39'	1,092	14'
Cedar II	75	60	75	50	38	30	28' x 39'	1,092	14'
Cedar III	75	60	75	50	32	24	28' x 39'	1,092	14'
Cedar I & II	200	120	150	100	48	40	57' x 39'	2,184	14'
Cedar II & III	200	120	150	100	48	40	57' x 39'	2,184	14'
The Cedars	300	200	225	175	72	64	85' x 39'	3,276	14'
The Summit	X	X	X	120	X	X	52' x 55'	2,675	Variable
Lily	90	70	100	50	38	30	40.5' x 21.8'	1,153	14'
Reflections Gallery	200	X	200	X	X	X	34' x 114'	4,190	Variable
Brightwood Board Room	40	32	X	X	26	X	25.3' x 31.5'	800	14'



# Summit Auditorium

**F**eaturing unmatched Dolby Digital Surround Sound and a built-in high-definition projection system, the Summit Auditorium is one-of-a-kind.

Perfect for large meetings and presentations, attendees will stay comfortable all day in ergonomically designed Herman Miller chairs.



## *Studios and Dens*

**P**erfect for small meetings, interviews, and breakouts, you'll feel right at home in these intimate spaces. The Studios feature a gas fireplace, and both Studios and Dens are equipped with 42" wall-mounted high-definition TVs and floor-to-ceiling windows.

STUDIOS	Cocktail Seating	Banquet Seating	Theater Seating	Classroom Seating	Conference Seating	U-Shape Seating	Width/Length	Square Feet	Ceiling Height
Spruce Studio (2)	20	12	X	X	12	X	15' x 25'	1,092	9'
DENS	Cocktail Seating	Banquet Seating	Theater Seating	Classroom Seating	Conference Seating	U-Shape Seating	Width/Length	Square Feet	Ceiling Height
Spruce Den (4)	12	8	X	X	8	X	12' x 19'	228	9'



# Outdoor Spaces

**E**xperience Cedarbrook's park-like setting and get outdoors during your next event. Whether for an afternoon reception in Chef's Garden or an expansive celebration on the Evergreen Lawn, the lush grounds serve as the perfect backdrop for events of all kinds.

And, guests will love unwinding with outdoor dining and libations at Copperleaf Restaurant and Copperleaf Bar & Terrace during casual post-meeting gatherings.

A photograph of a garden waterfall. The waterfall is constructed from a dark stone wall on the left, with water cascading down into a pool. To the right of the wall, several large, grey, rounded boulders are stacked to form a natural-looking structure. The background is filled with lush green trees and tall grasses, creating a peaceful and natural atmosphere. The lighting is soft, suggesting late afternoon or early morning.

*Your Urban Oasis Awaits*

*Phone* 206.901.9268 | *Fax* 206.901.9269  
*Email* [sales@cedarbrooklodge.com](mailto:sales@cedarbrooklodge.com) | *Reservations* 877.515.2176  
18525 36th Avenue South | Seattle, Washington 98188  
**[www.CedarbrookLodge.com](http://www.CedarbrookLodge.com)**