



Hearthstone, Inc. • 1630 East Highway 29-10 • Dandridge, Tennessee 37725  
July 17, 2012  
Hearthstone Inc.  
telephone: 800/247-4442 • fax: 865/391-9262

Marti

I have enclosed some of the views and floor plans for a grist mill. The proposal is based upon the heavy timber portion of the project only which means that the conventional cost portion of the project will need to be added by local GC. This is a starting point and we can go from here to a smaller or large design or a new design concept. If this is something that is to be pursued then you would need a full set of architectural and engineered drawings to proceed.

Thanks  
Terry Reneau  
Project Manager  
Hearthstone, Inc.  
866-688-7563  
treneau@hearthstonehomes.com

July 17, 2012

**Hearthstone, Inc. Proposal**

For Timberframe Grist Meal.

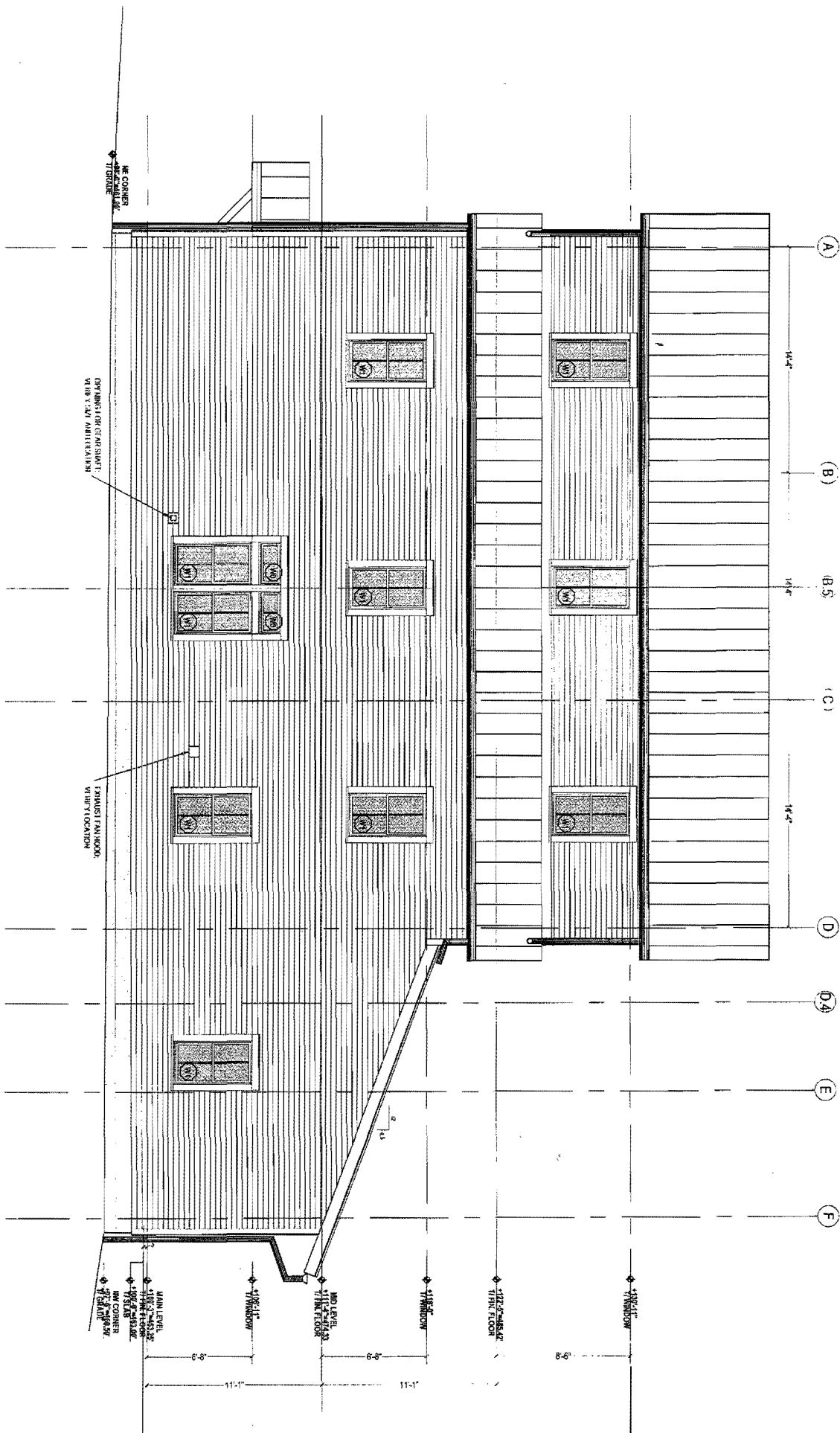
Based upon potential design concept attached.

Scope this proposal is for the heavy timber portion of the project only. Mechanical, electrical, etc and remaining items to be provided by others. Wood material is white oak with sand blasted finish.

Materials cost for Heavy Timbers.	\$178,290.00
Installation of Heavy Timbers	\$47,296.20
Freight	\$3,656.25
Tax	\$12,034.58
<b>Total Package</b>	<b>\$241,277.03</b>

Hearthstone Inc  
Terry Reneau  
Project Manager  
866-688-7563  
treneau@hearthstonehomes.com

Hearthstone, Inc.  
1630 E Hwy 25-70  
Dandridge, TN 37725



ME CORNER  
ELEVATOR SHAFT  
TERRACE

OPENING FOR ELEVATOR SHAFT  
VIBRATION MITIGATION

EXHAUST FAN ROOM  
VIBRATION MITIGATION

JANITOR  
MID LEVEL  
1ST FLOOR  
ME CORNER  
VIBRATION MITIGATION

MID LEVEL  
1ST FLOOR

2ND FLOOR  
1ST FLOOR

2ND FLOOR  
1ST FLOOR

6'-0"

11'-1"

6'-0"

11'-1"

8'-0"

(A)

(B)

(B.5)

(C)

(D)

(D.4)

(E)

(F)

14'-0"

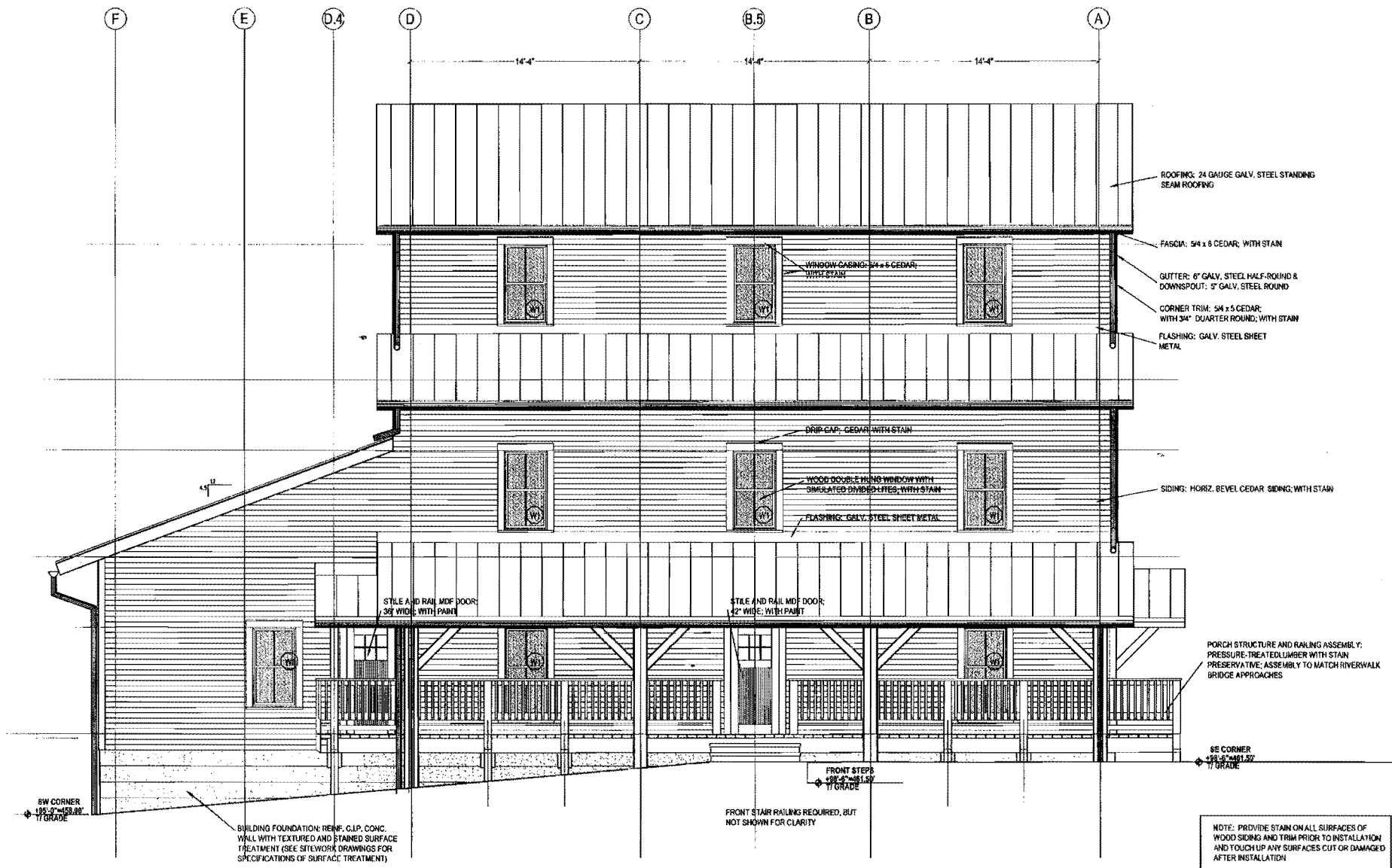
14'-0"

14'-0"

2  
1

NO.	DESCRIPTION	SIZE	EXTERIOR FINISH	INTERIOR FINISH	COLOR	GLASS	SHL. DIVIDED LINES	SCREEN	FRAMES	OPERATION	FRONT PANEL	FRONT PANEL	FRONT PANEL
W1	TRANSOM	2'-7 3/8" x 1'-6"	PRIMED BARE	-	3/4" INSUL.	YES	NO		SEE AS.0 SHEETS	MARVIN	WOOD DOUBLE HUNG	WUDHT 2612-SDL	CARACCO, HERR, MARVIN, PELLA, POZZI, WILBERSHELD
W2	DOUBLE HUNG	2'-7 3/8" x 4'-8"	PRIMED BARE	-	3/4" INSUL.	YES	YES		SEE AS.0 SHEETS	MARVIN	WOOD DOUBLE HUNG	WUDH 2624-SDL	
W3	DOUBLE HUNG	2'-1 3/8" x 4'-1"	PRIMED BARE	-	3/4" INSUL.	YES	NO		SEE AS.0 SHEETS	MARVIN	WOOD DOUBLE HUNG	WUDH 2020-SDL	

1. SUBSTITUTIONS: PRODUCTS NOTED ON THE SCHEDULE ARE FOR BIDDING PURPOSES ONLY. EQUIVALENT PRODUCTS BY OTHER MANUFACTURERS MAY BE SUBMITTED TO THE ARCHITECT FOR REVIEW AND POSSIBLE APPROVAL. ACTUAL SELECTION OF PRODUCTS WILL BE BY OWNER AND ARCHITECT DURING SUBMITTAL PROCESS.

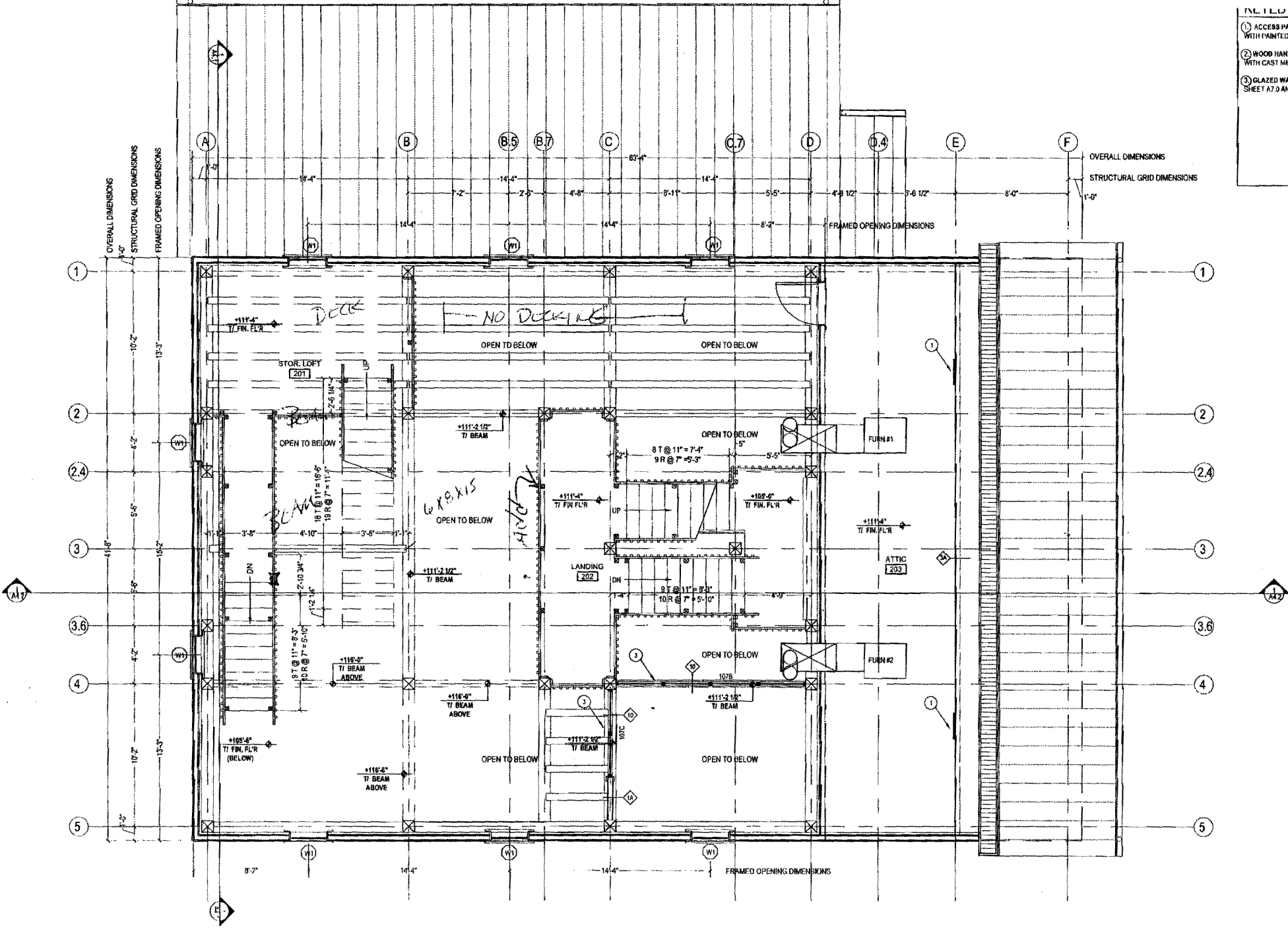


**1** SOUTH EXTERIOR ELEVATION  
 SCALE: 1/4"=1'-0"

NOTE: PROVIDE STAIN ON ALL SURFACES OF WOOD SIDING AND TRIM PRIOR TO INSTALLATION AND TOUCH UP ANY SURFACES CUT OR DAMAGED AFTER INSTALLATION



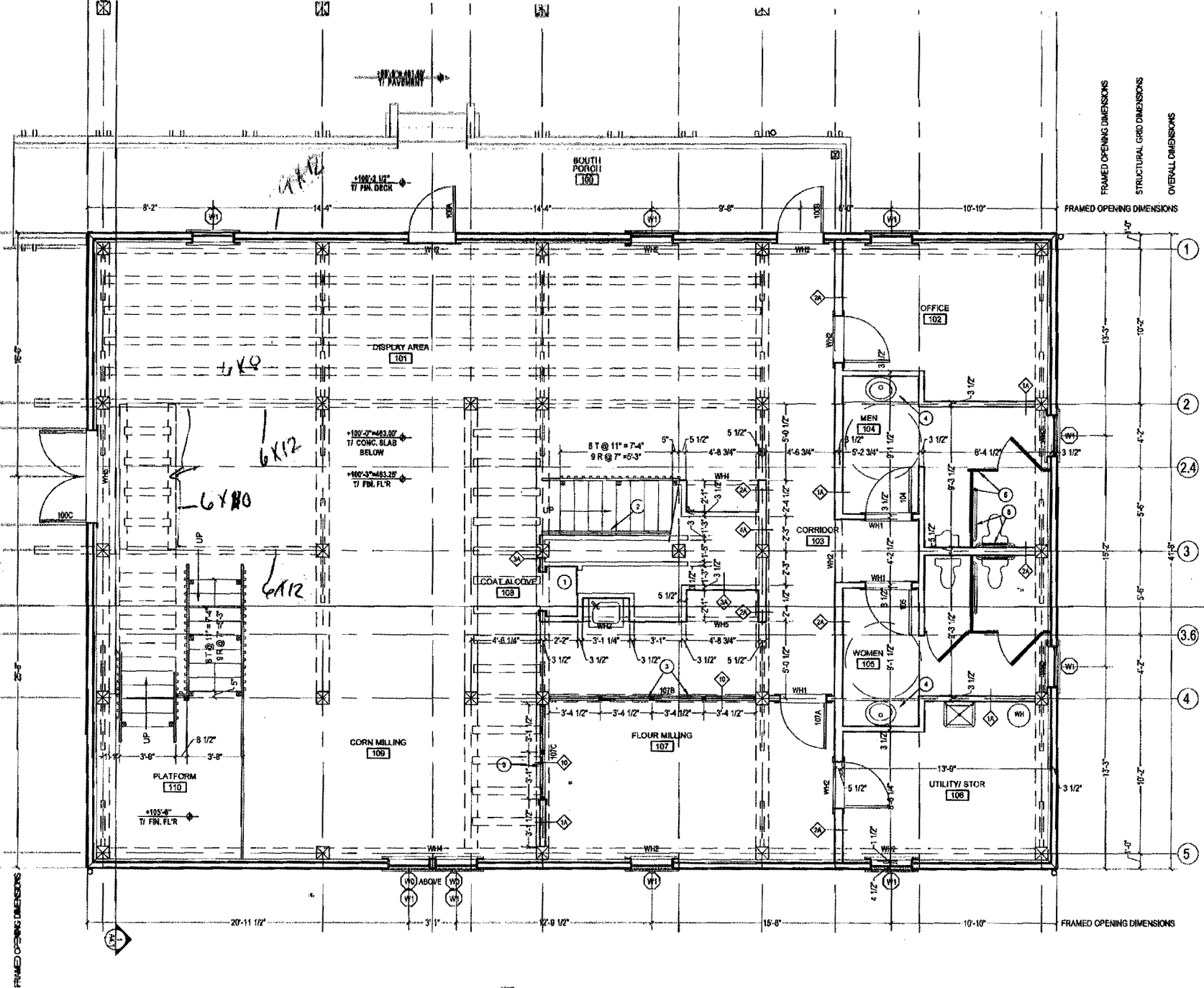
- ① ACCESS PANEL: WITH PAINTED DRYW
- ② WOOD HANDRAIL: WITH CAST METAL W
- ③ GLAZED WALL: P SHEET A7.0 AND OPE



(1) MIDDLE LEVEL FLOOR PLAN  
 IN ALL 104-110

**KEYED NO.**

- ① ACCESS PANELS WITH PAINTED DR.
- ② WOOD HANDRAILS WITH CAST METAL
- ③ GLAZED WALL: SHEET AT B AND C
- ④ COUNTERTOP: CABINETS REQU.
- ⑤ TOILET PARTITION

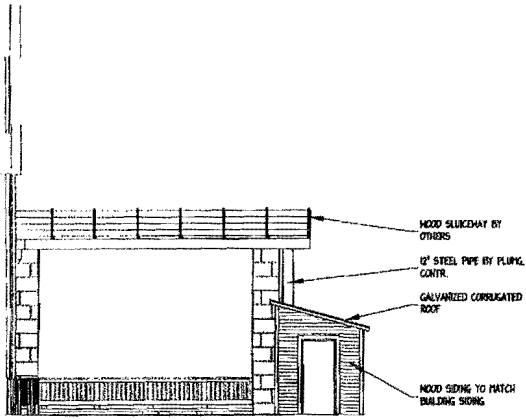
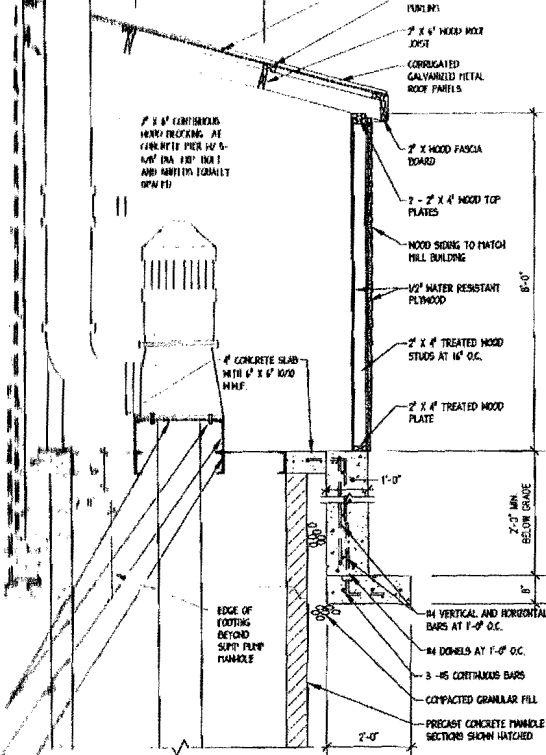


**1 MAIN LEVEL FLOOR PLAN**  
SCALE: 1/4"=1'-0"

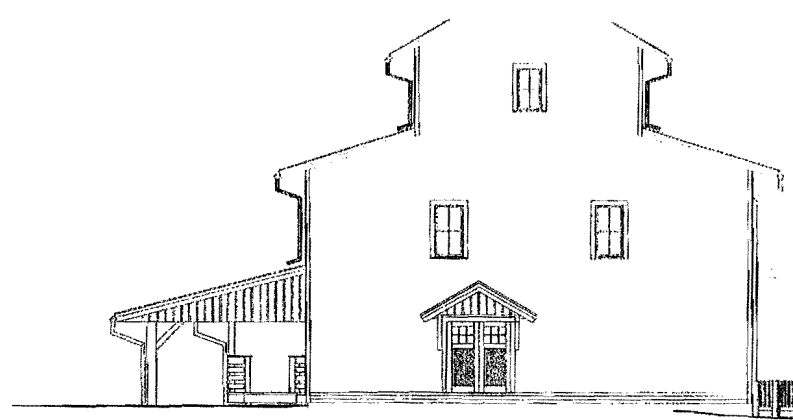
SCHEDULE/SPECS		OF WOOD HEADERS AND BEAMS			
MARK	DESCRIPTION	SIZE	SPAN	LOADING CONDITION	MIN.
WH1	CONVENTIONAL HEADER	2 1/2 x 8	UNDER 4'-0"	NON-LOADBEARING WALL	3"
WH2	CONVENTIONAL HEADER	2 1/2 x 8 w/1/2" PLYWD	UNDER 4'-0"	LOADBEARING WALL	3"
WH3	CONVENTIONAL HEADER	4" x 8"	4'-0" TO 8'-0"	NON-LOADBEARING WALL	3"
WH4	CONVENTIONAL HEADER	4" x 8"	4'-0" TO 8'-0"	LOADBEARING WALL	3"
WH5	ENGINEERED WOOD BEAM	3 1/2" x 8 1/2" LVL	4'-0" TO 8'-0"	LOADBEARING WALL	3"
WH6	ENGINEERED WOOD BEAM	3 1/2" x 11 7/8" LVL	8'-0" TO 8'-0"	LOADBEARING WALL	4 1/2"
WH7	HOT TUB				
WH8	ENGINEERED WOOD BEAM	8 1/4" x 11 7/8" LVL	8'-0" TO 12'-0"	LOADBEARING WALL	4 1/2"







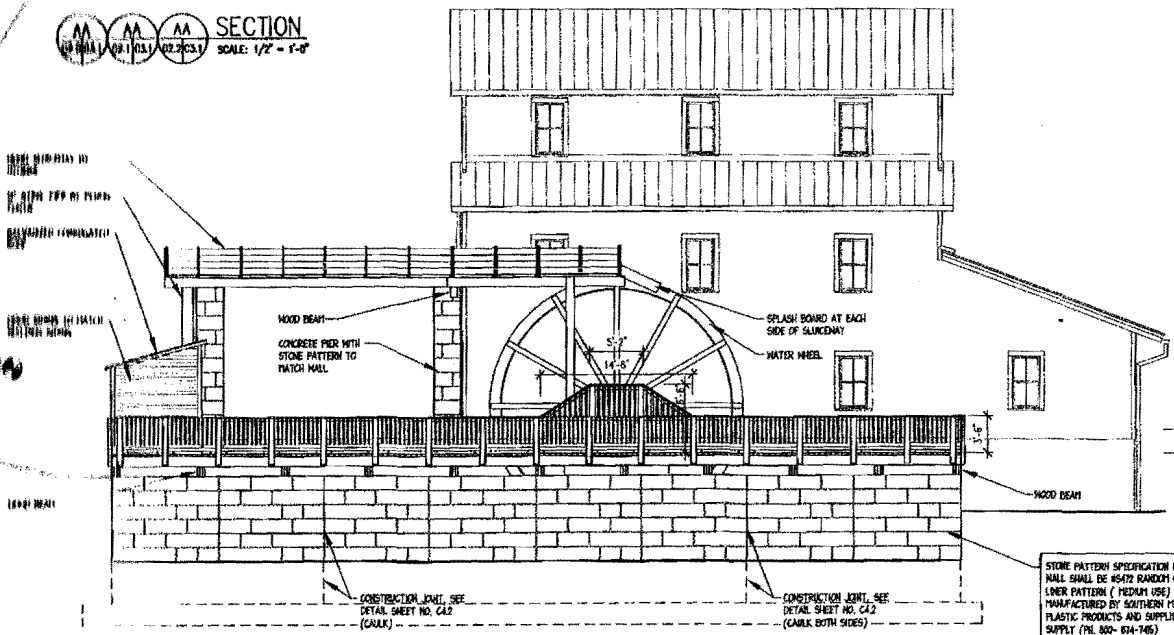
**SOUTH ELEVATION**  
SCALE: 1/8" = 1'-0"



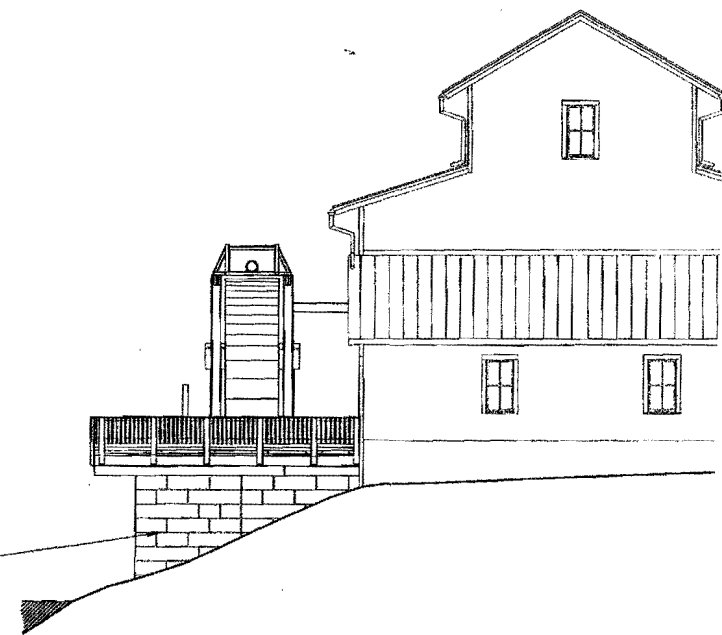
**EAST ELEVATION**  
SCALE: 1/8" = 1'-0"

NOTE: ALL EXTERIOR LUMBER SHALL BE PRESURE TREATED LUMBER WITH PRESERVATIVE TREATMENT AND RECEIVE TWO COATS OF STAIN, (DIMENSION LUMBER - SOUTHERN YELLOW PINE, DOUGLAS FIR-LARCH, HEM-FIR OR HEM FUR), SEE SPECS.

**SECTION**  
SCALE: 1/2" = 1'-0"



**NORTH ELEVATION**  
SCALE: 1/8" = 1'-0"



**WEST ELEVATION**  
SCALE: 1/8" = 1'-0"

STONE PATTERN SPECIFICATION FOR CONCRETE WALL SHALL BE 4512 BARBON CUT STONE FORM (LNER PATTERN ( MEDIUM USE) AS MANUFACTURED BY SOUTHERN METAL AND PLASTIC PRODUCTS AND SUPPLIED BY JEBBITE SUPPLY (PH. 802-834-146)

STAIN AS MANUFACTURED BY EPMAR CORPORATION AND SUPPLIED BY JEBBITE SUPPLY, COLOR TO BE SELECTED BY OWNER.

FIBERGLASS THIS SHALL BE USED IN FORMWORK.